

Izdelujemo in obnavljamo gumirane, poliuretanske in zobate kolote za lesnoobdelovalne stroje

Nakup novih, standardnih kolotov

• za podajalnike (HolzHer, Elu, Haffner, Maggi, Festo, SCM, Roma, Frommia, Nastro-Zičnica, Wegoma, Univer ...)

• za štiristranke (Weinig, Wadkin, Gubisch, SCM, Harbs, Wegoma, Lestro-Ledinek, Guilliet, Roma, Festo-Goliath, Georg Fischer, Verboom ...)

• za skobeljne stroje (Martin, Panhans, SAC, Kölle, Hofmann ...)

Na zalogi imamo več kot 200 tipov standardnih kolotov; naročite, pošljemo takoj!

Izdelava kolotov po naročilu

Če v našem bogatem proizvodnem programu ni kolota, ki ga potrebujete, ga bomo radi izdelali po vašem načrtu.

Obnova obrabljenih kolotov

Jedra starih kolotov očistimo in nanje vulkaniziramo novo gumijasto ali PU oblogo. Rok obnove: 5 delovnih dni ali po dogovoru.

Ob naročilu prosimo navedite znamko stroja in dimenzije kolota (premer, širina, izvrtina, utor).

Trdote gume vam ni potrebno izbirati, saj vedno uporabimo gumo, ki je najprimernejša za namen posameznega kolota. Na posebno željo in po predhodnem dogovoru lahko kolote obnovimo z gumo ali poliuretanom v trdoti po vaši izbiri.

Herstellung und Erneuerung von gummierten, polyurethan und verzahnten Rollen für Holzbearbeitungsmaschinen

Einkauf von neuen Standard-Rollen

• für Vorschubapparate (HolzHer, Elu, Maggi, Festo, SCM, Roma, Frommia, Univer, Wegoma, Haffner ...)

• für Vierseitenhobelmaschinen (Weinig, SCM, Wadkin, Gubisch, Verboom, Guilliet, Harbs, Lestro-Ledinek, Georg Fischer, Roma, Festo-Goliath ...)

• für Hobelmaschinen (Martin, Panhans, SAC, Kölle, Hofmann ...)

Wir haben über 200 Arten von Standard-Rollen auf Lager. Sie bestellen und wir liefern prompt!

Herstellung von Rollen nach der Bestellung
Falls Sie in unserem reichem Programm die Rolle, die Sie benötigen nicht finden, werden wir gerne diese Rolle, laut Ihrer Zeichnung, herstellen.

Erneuerung von abgenutzten Rollen

Die Kerne von abgenutzten Rollen werden gereinigt und mit neuem Gummi- oder PU- Belag beschichtet.

Erneuerungsfrist beträgt 5 Arbeitstage oder kürzer (nach Vereinbarung).

Bei der Bestellung bitten wir Sie den Maschinentyp und die Rollen-Dimensionen anzugeben (Durchmesser, Breite, Bohrung, Keilnut). Es ist nicht notwendig, die Härte der Gummimischung oder PU auszuwählen. Wir verwenden immer die Gummimischungen oder PU, die für den einzelnen Gebrauch der Rollen bestentsprechend sind. Auf Wunsch und aufgrund der Vereinbarung können wir die Rollen auch nach Ihrer Wahl erneuern.

Production and renewal of rubber, polyurethan & steel rollers for woodworking machines

Purchase of new, standard rollers

• for power feeders (HolzHer, Haffner, Elu, Maggi, Festo, Frommia, Roma, SCM, Univer, Wegoma ...)

• for moulders (Weinig, SCM, Wadkin, Gubisch, Verboom, Guilliet, Harbs, Lestro-Ledinek, Georg Fischer, Roma, Festo-Goliath ...)

• for planers (Martin, Panhans, SAC, Kölle, Hofmann ...)

Over 200 standard roller types on stock; you order, we send immediately!

Special dimension rollers made to order

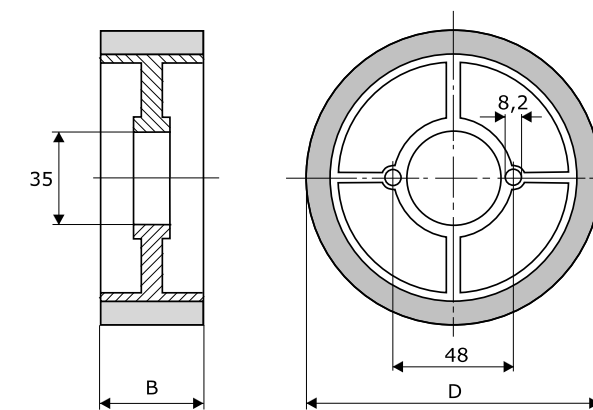
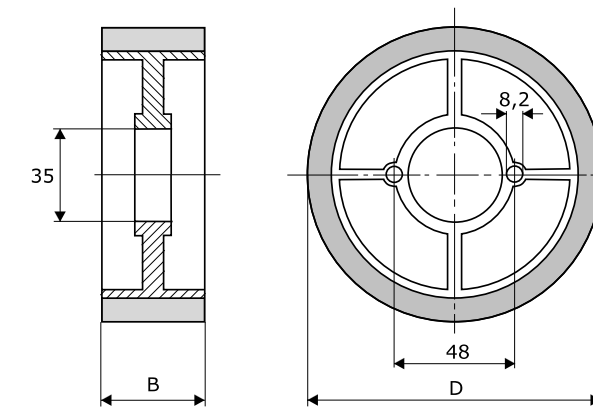
If you can not find a suitable roller in our wide standard program, we will be glad to manufacture rollers according to your design.

Renewal of worn out rollers

We remove old rubber coat and vulcanize new rubber or PU layer on the cleaned roller core. Repair time: 5 working days (shorter term possible on request).

When ordering, please specify roller dimensions (diameter, width, bore, key-wey) and the producer of the machine.

You do not have to choose hardness of rubber or PU, as we always use rubber that suits best to the purpose of the specific roller. On special request, we can coat rollers with the rubber or PU of your choice.



| | | | | |
|------------------------------------|--------|--------|--------|--------|
| D (mm) | 110 | 110 | 110 | 110 |
| B (mm) | 20 | 25 | 30 | 40 |
| Kat. št. Bestell Nr. Cat. No | 110-20 | 110-25 | 110-30 | 110-40 |

| | | | | |
|------------------------------------|--------|--------|--------|--------|
| D (mm) | 110 | 110 | 113 | 113 |
| B (mm) | 50 | 60 | 50 | 60 |
| Kat. št. Bestell Nr. Cat. No | 110-50 | 110-60 | 113-50 | 113-60 |

| | | | | | |
|------------------------------------|--------|--------|--------|--------|---------|
| D (mm) | 120 | 120 | 120 | 120 | 120 |
| B (mm) | 20 | 30 | 40 | 50 | 60 |
| Kat. št. Bestell Nr. Cat. No | 120-20 | 120-30 | 120-40 | 120-50 | 120-60S |

| | | | |
|------------------------------------|--------|---------|--------|
| D (mm) | 128 | 128 | 135 |
| B (mm) | 50 | 60 | 50 |
| Kat. št. Bestell Nr. Cat. No | 128-50 | 128-60S | 135-50 |



gumirani in PU koluti
gummierte und PU rollen
rubber and PU rollers

www.rando.nl

| | | | | | |
|--------|-----|-----|-----|-----|-----|
| D (mm) | 110 | 110 | 110 | 110 | 113 |
| B (mm) | 30 | 40 | 50 | 60 | 60 |
| L1 | 16 | 19 | 29 | 29 | 29 |
| L2 | 2 | 9 | 9 | 19 | 19 |

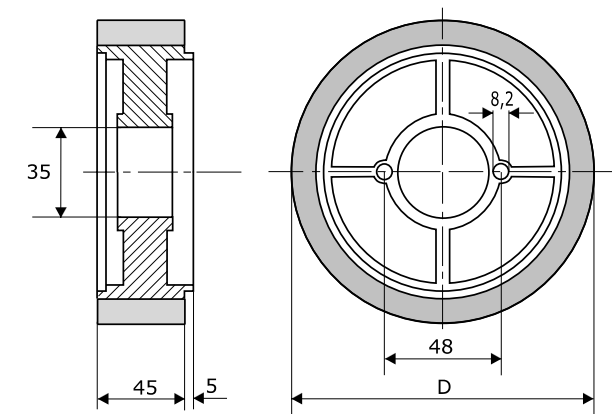
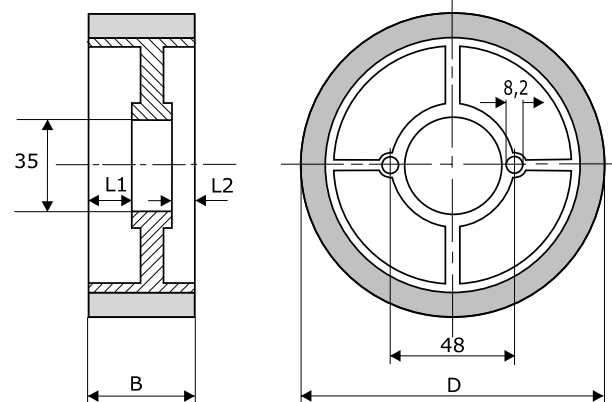
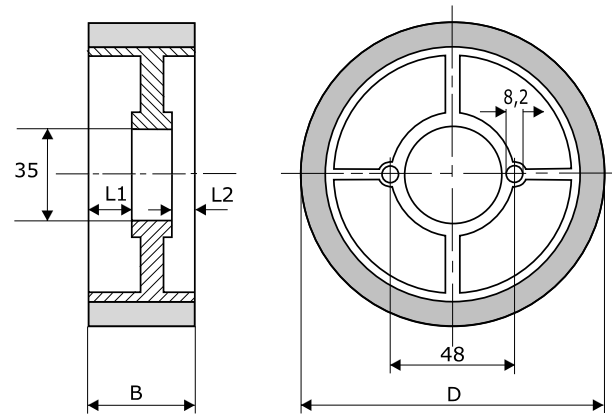
Kat. št.
Bestell Nr. 110-30A 110-40A 110-50A 110-60A 113-60A
Cat. No

| | | | | | |
|--------|-----|-----|-----|-----|-----|
| D (mm) | 120 | 120 | 120 | 120 | 128 |
| B (mm) | 30 | 40 | 50 | 60 | 60 |
| L1 | 16 | 19 | 29 | 29 | 29 |
| L2 | 2 | 9 | 9 | 19 | 19 |

Kat. št.
Bestell Nr. 120-30A 120-40A 120-50A 120-60A 128-60A
Cat. No

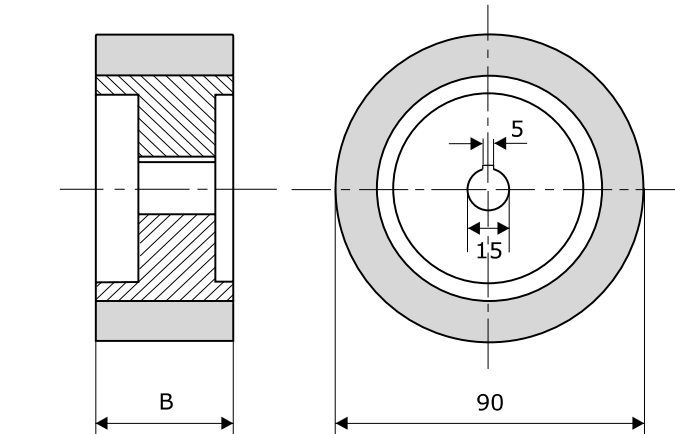
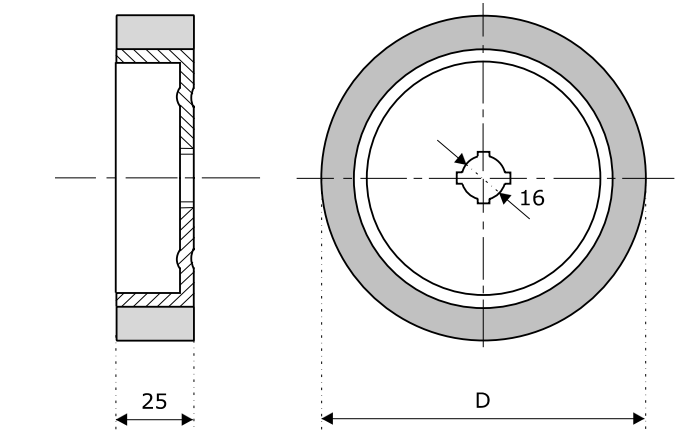
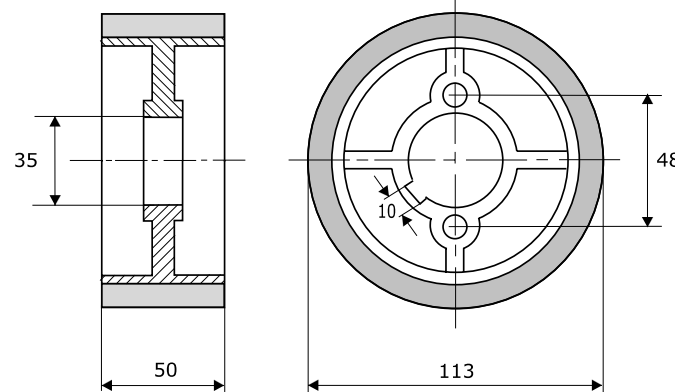
| | | |
|------------------------------------|--------|--------|
| D (mm) | 110 | 120 |
| Kat. št. Bestell Nr. Cat. No | 110-45 | 120-45 |

6



RANDO
TECHNIC

7



www.rando.nl

STÄHLE

Kat. št.
Bestell Nr. 113-50 Stähle
Cat. No

ELU

| | | |
|------------------------------------|------------|------------|
| D (mm) | 110 | 120 |
| Kat. št. Bestell Nr. Cat. No | 110-25 Elu | 120-25 Elu |

FESTO

| | | | |
|------------------------------------|-------------|-------------|-------------|
| B (mm) | 50 | 40 | 33 |
| Kat. št. Bestell Nr. Cat. No | 90-50 Festo | 90-40 Festo | 90-33 Festo |

gumirani in PU koluti
gummierte und PU rollen
rubber and PU rollers

A

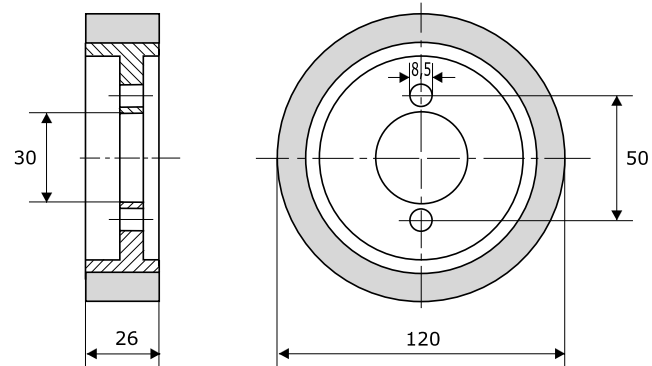


gumirani in PU koloti
gummierte und PU rollen
rubber and PU rollers

www.rando.nl

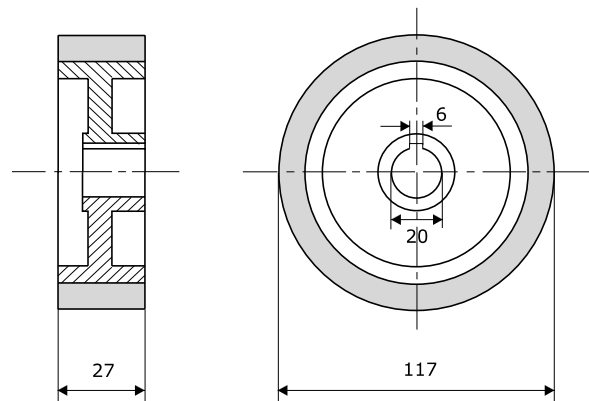
FESTO GOLIATH

Kat. št.
Bestell Nr. 120-26 Festo Goliath
Cat. No



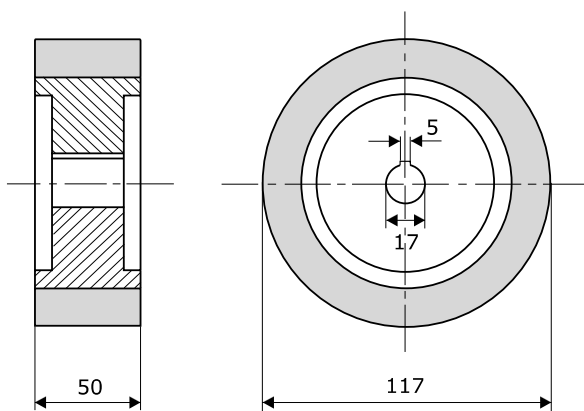
ROMA

Kat. št.
Bestell Nr. 117-27 Roma
Cat. No



ROMA

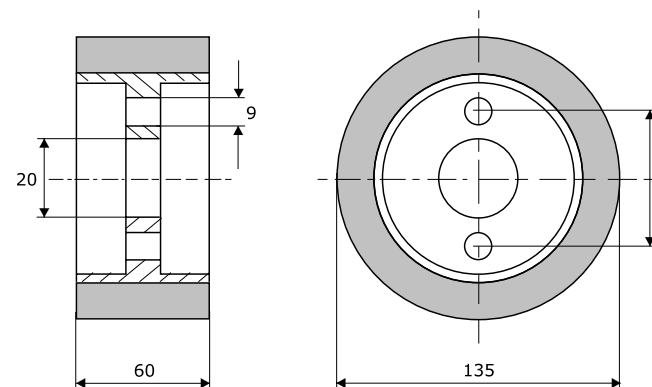
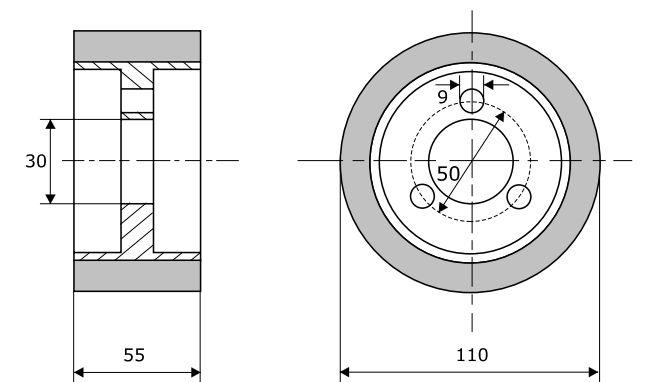
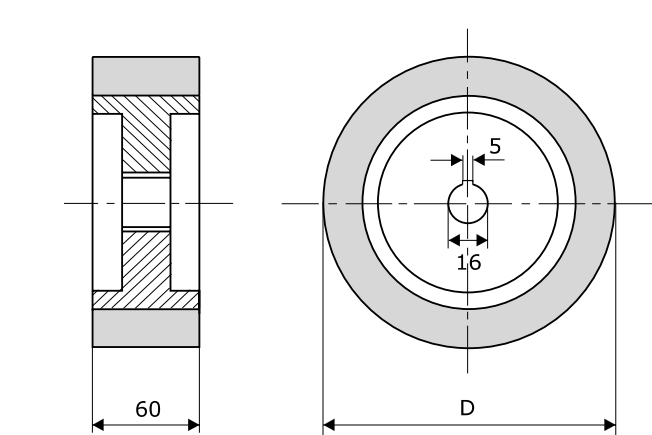
Kat. št.
Bestell Nr. 117-50 Roma
Cat. No



8



9



FROMMIA

D (mm) 80 70

Kat. št.
Bestell Nr. 80-60 Frommia 70-60 Frommia
Cat. No

FROMMIA

Kat. št.
Bestell Nr. 110-55 Frommia
Cat. No

FROMMIA

Kat. št.
Bestell Nr. 135-60 Frommia
Cat. No

www.rando.nl

gumirani in PU koloti
gummierte und PU rollen
rubber and PU rollers

A



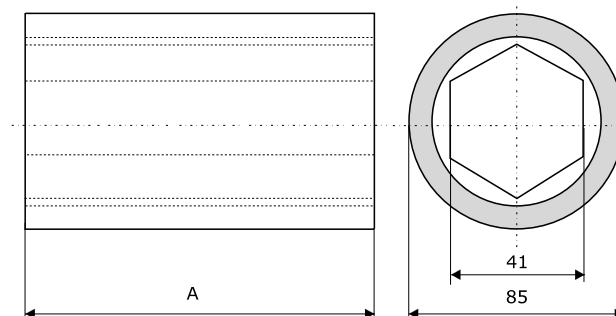
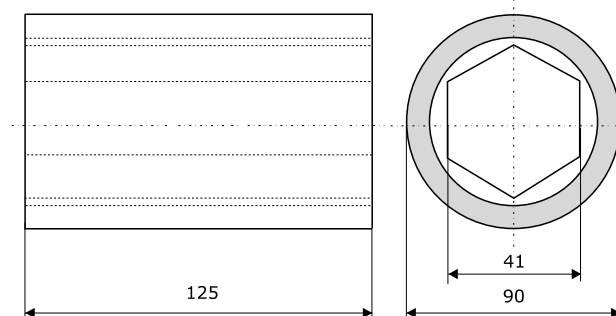
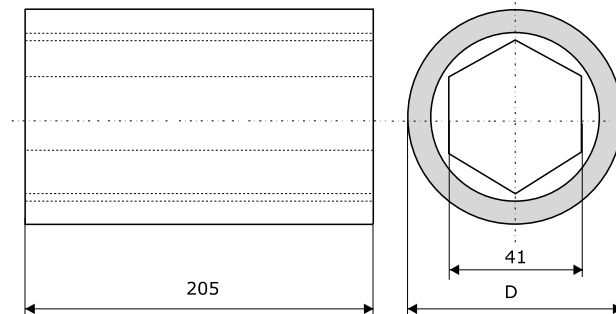
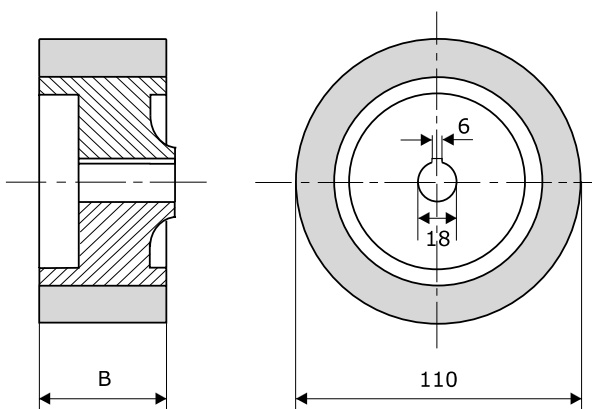
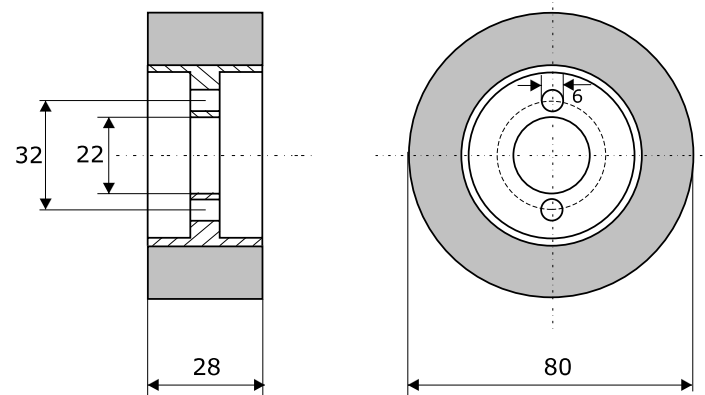


MAGGI

Kat. št. 80-28 Maggi
Bestell Nr.
Cat. No

DDR

| | | | |
|-------------|------------|------------|------------|
| B (mm) | 25 | 50 | 60 |
| Kat. št. | 110-25 DDR | 110-50 DDR | 110-60 DDR |
| Bestell Nr. | | | |
| Cat. No | | | |



MARTIN

| | | |
|--------|----|----|
| D (mm) | 74 | 85 |
|--------|----|----|

| | | |
|-------------|---------------|---------------|
| Kat. št. | | |
| Bestell Nr. | 74-205 Martin | 85-205 Martin |
| Cat. No | | |

PANHANS

| | | |
|--------|----|----|
| D (mm) | 75 | 90 |
|--------|----|----|

| | | |
|-------------|----------------|----------------|
| Kat. št. | | |
| Bestell Nr. | 75-125 Panhans | 90-125 Panhans |
| Cat. No | | |

SAC

| | | | |
|--------|-----|-----|-----|
| A (mm) | 210 | 175 | 120 |
|--------|-----|-----|-----|

| | | | |
|-------------|------------|------------|------------|
| Kat. št. | | | |
| Bestell Nr. | 85-210 SAC | 85-175 SAC | 74-120 SAC |
| Cat. No | | | |





HOFMANN

A (mm) 210 170 90

Kat. št.
Bestell Nr. 75-210 Hofmann 75-170 Hofmann 75-90 Hofmann
Cat. No

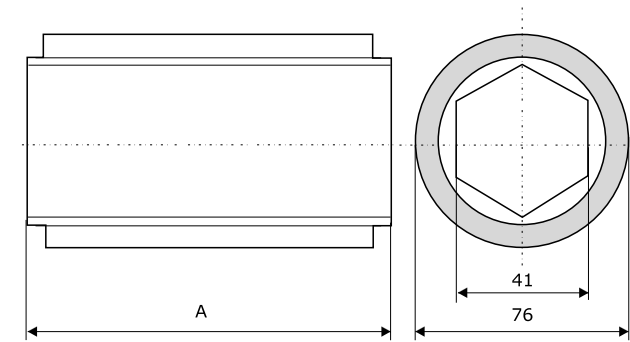
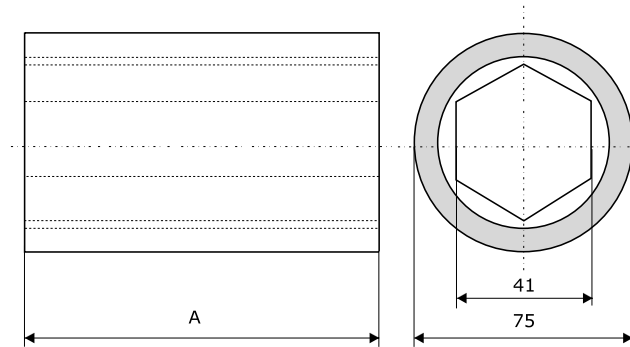
KÖLLE

A (mm) 644 514

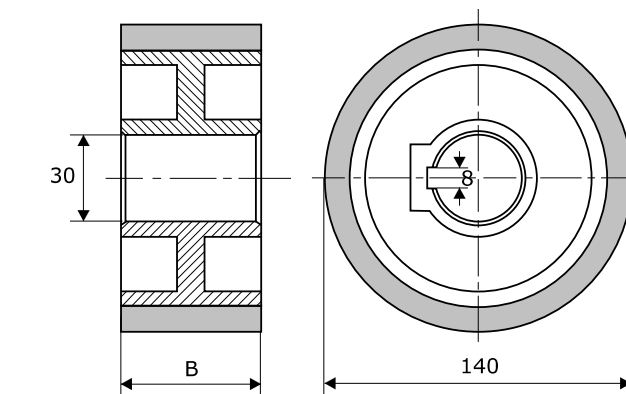
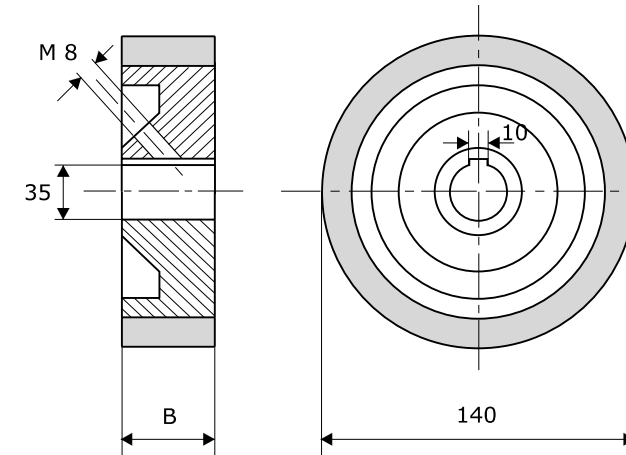
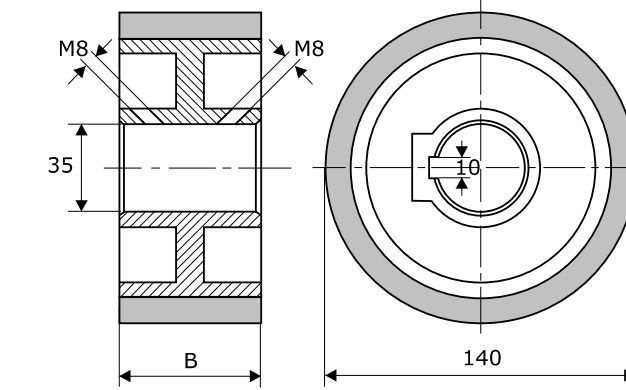
Kat. št.
Bestell Nr. 76-644 Kölle 76-514 Kölle
Cat. No



12



13



WEINIG

B (mm) 50 30

Kat. št.
Bestell Nr. 140-50-35V 140-30-35V
Cat. No

WEINIG

B (mm) 25 20 15 10

Kat. št.
Bestell Nr. 140-25-35V 140-20-35V 140-15-35V 140-10-35V
Cat. No

WEINIG

B (mm) 50 25

Kat. št.
Bestell Nr. 140-50-30 140-25-30
Cat. No





WEINIG

Kat. št.
Bestell Nr.
Cat. No

140-50-MT



WEINIG RING

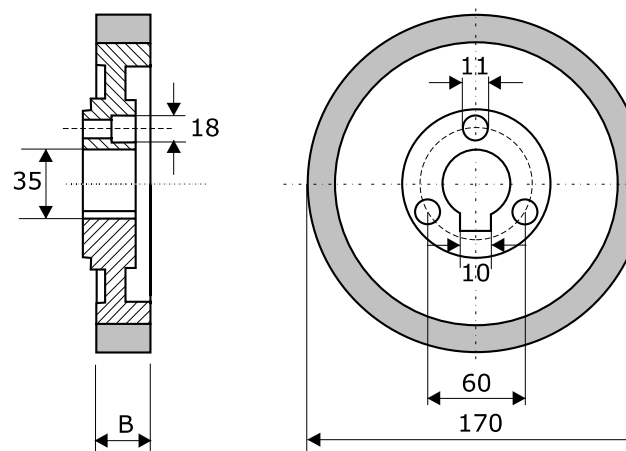
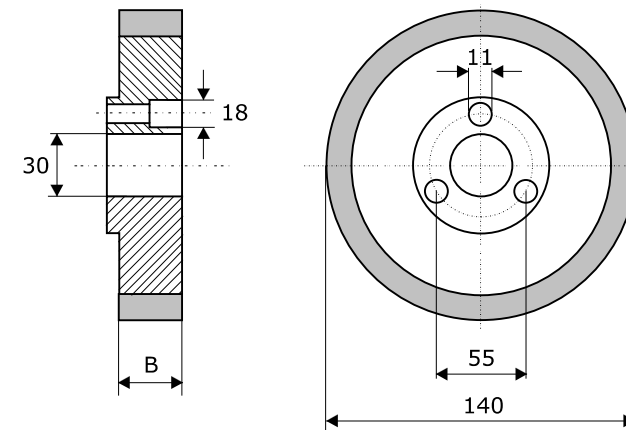
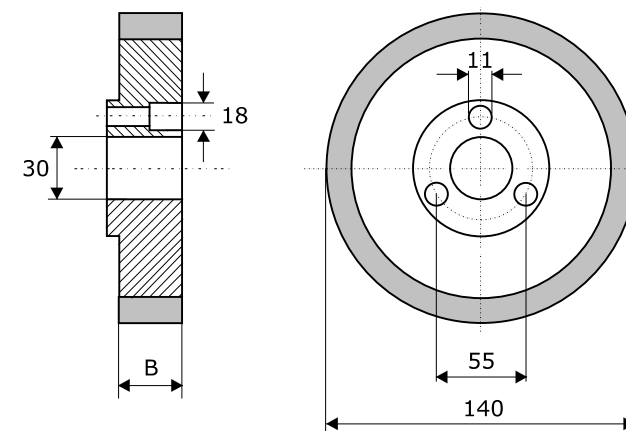
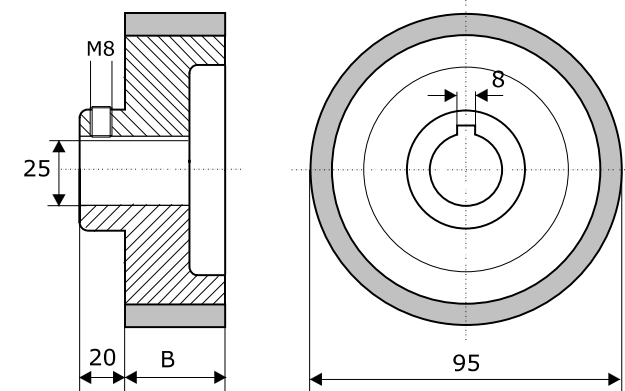
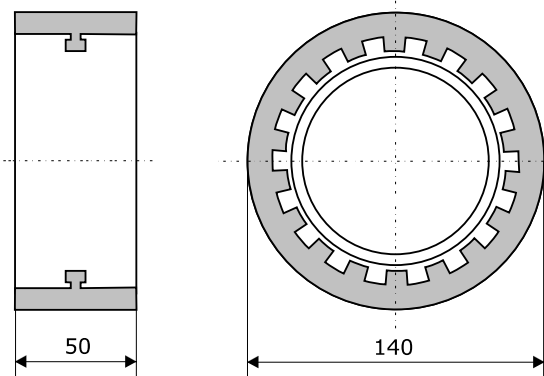
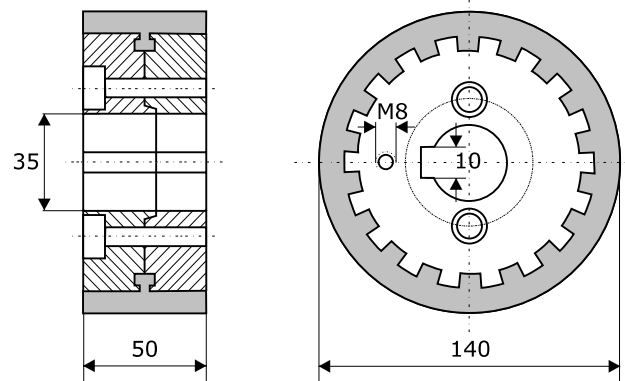
Kat. št.
Bestell Nr.
Cat. No

140-50-RT



WEINIG

| | | |
|------------------------------------|----------|----------|
| B (mm) | 50 | 30 |
| Kat. št. Bestell Nr. Cat. No | 95-50-25 | 95-30-25 |



WEINIG

| | | | |
|------------------------------------|-----------|-----------|-----------|
| B (mm) | 50 | 30 | 25 |
| Kat. št. Bestell Nr. Cat. No | 140-50-3V | 140-30-3V | 140-25-3V |

WEINIG

| | | | |
|------------------------------------|-----------|-----------|-----------|
| B (mm) | 22 | 19 | 15 |
| Kat. št. Bestell Nr. Cat. No | 140-22-3V | 140-19-3V | 140-15-3V |

WEINIG

| | | |
|------------------------------------|-----------|-----------|
| B (mm) | 50 | 15 |
| Kat. št. Bestell Nr. Cat. No | 170-50-3V | 170-15-3V |





WEINIG

Kat. št.
Bestell Nr. 95-12-35 Weinig
Cat. No



WEINIG

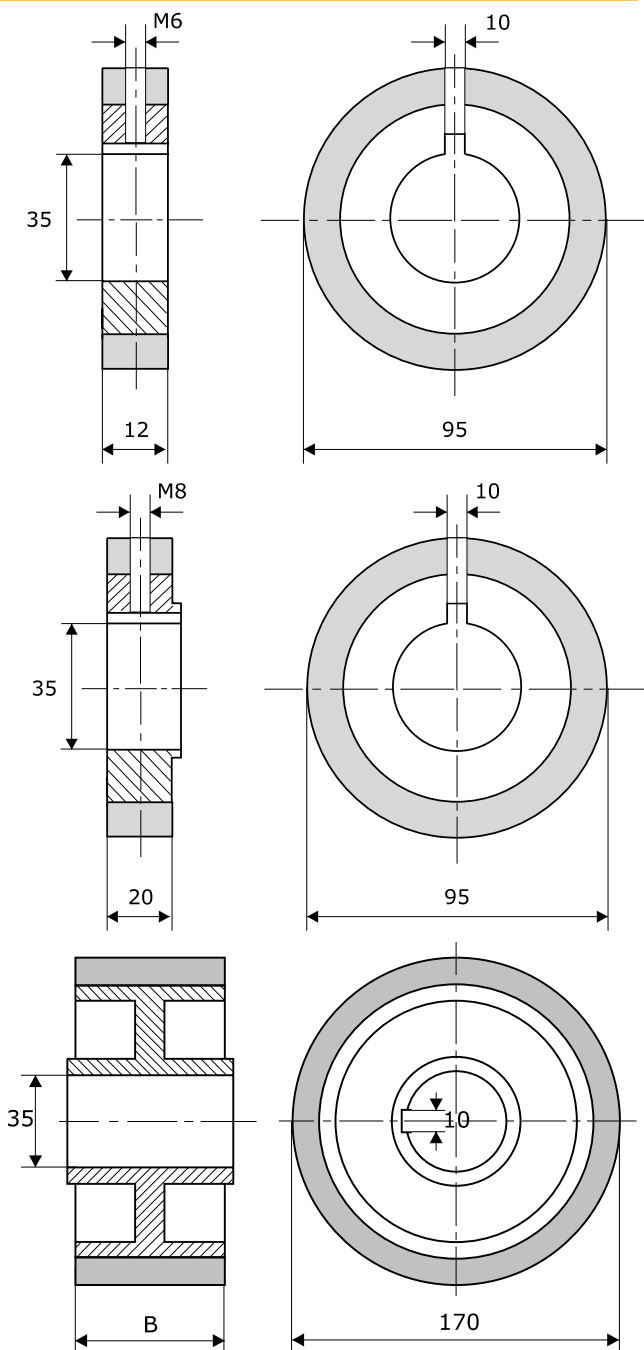
Kat. št.
Bestell Nr. 95-20-35 Weinig
Cat. No



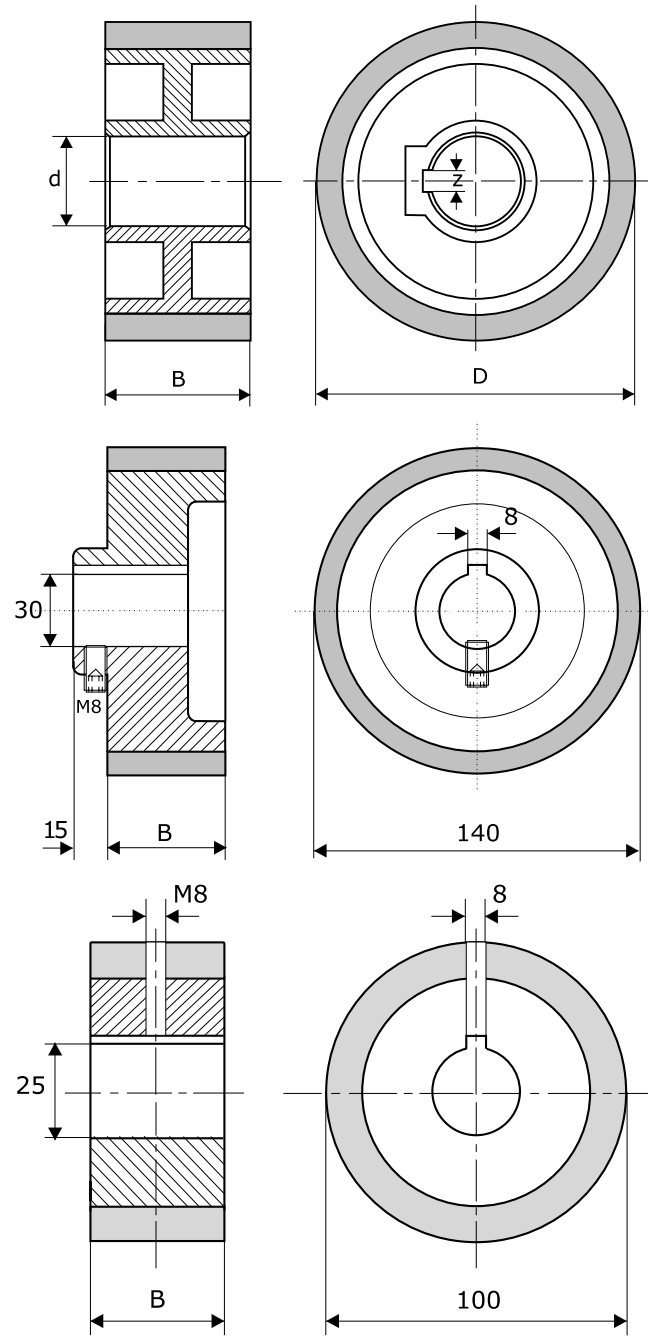
WEINIG

| | | | | |
|------------------------------------|-----------|-----------|-----------|-----------|
| B (mm) | 50 | 35 | 25 | 20 |
| Kat. št. Bestell Nr. Cat. No | 170-50-35 | 170-35-35 | 170-25-35 | 170-20-35 |

16



17



LESTRO

| | | | |
|--------|-----|-----|-----|
| D (mm) | 140 | 140 | 240 |
| B (mm) | 50 | 25 | 48 |
| d (mm) | 30 | 30 | 50 |
| z (mm) | 6 | 6 | 10 |

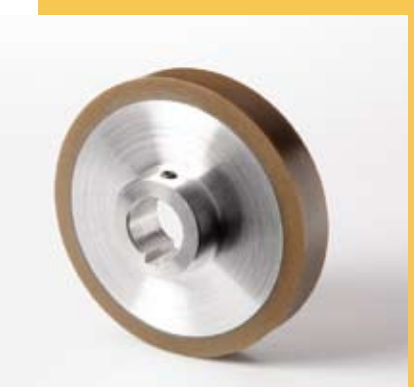
Kat. št.
Bestell Nr. 140-50 Lestro 140-25 Lestro 240-48 Lestro
Cat. No

GUBISCH

| | | | |
|------------------------------------|-------------------|-------------------|-------------------|
| B (mm) | 50 | 30 | 25 |
| Kat. št. Bestell Nr. Cat. No | 140-50 Gubisch | 140-30 Gubisch | 140-25 Gubisch |

GUBISCH

| | | | |
|------------------------------------|----------------------|----------------------|----------------------|
| B (mm) | 50 | 35 | 25 |
| Kat. št. Bestell Nr. Cat. No | 100-50-25 Gubisch | 100-35-25 Gubisch | 100-25-25 Gubisch |



gumirani in PU koloti
gummierte und PU rollen
rubber and PU rollers

www.rando.nl



HARBS

| | | | | | |
|-------------|--------|--------|--------|--------|--------|
| D (mm) | 165 | 165 | 180 | 180 | 180 |
| B (mm) | 50 | 35 | 80 | 50 | 35 |
| Kat. št. | | | | | |
| Bestell Nr. | 165-50 | 165-35 | 180-80 | 180-50 | 180-35 |
| Cat. No | Harbs | Harbs | Harbs | Harbs | Harbs |

GEORG FISCHER

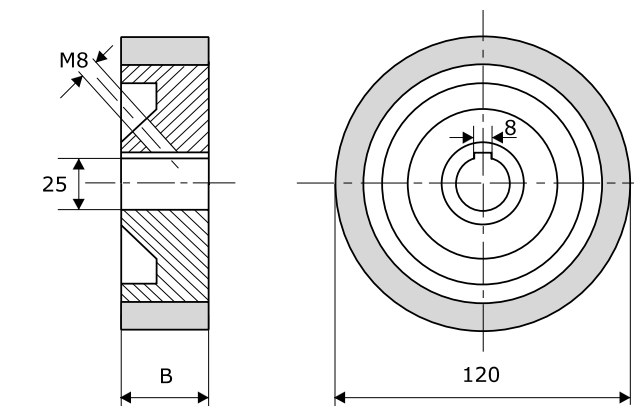
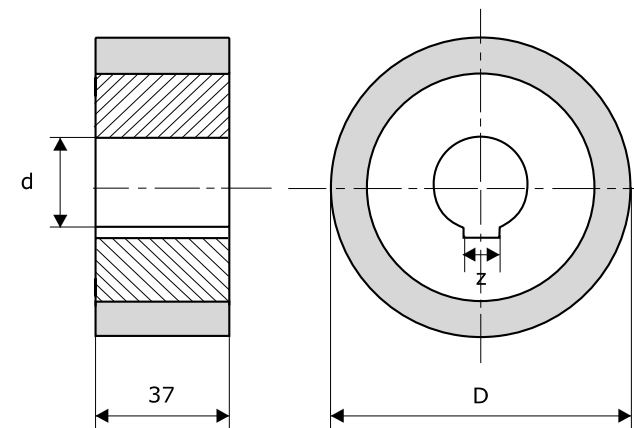
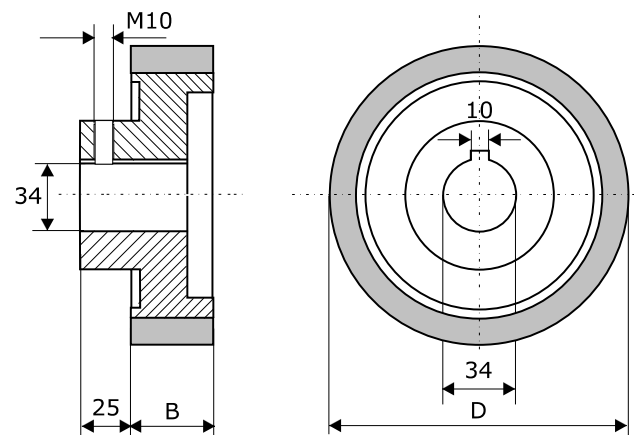
| | | | |
|-------------|-----------|-----------|-----------|
| D (mm) | 183 | 143 | 123 |
| d (mm) | 50 | 35 | 35 |
| z (mm) | 14 | 10 | 10 |
| Kat. št. | | | |
| Bestell Nr. | 183-37 GF | 143-37 GF | 123-37 GF |
| Cat. No | | | |

GULLIET

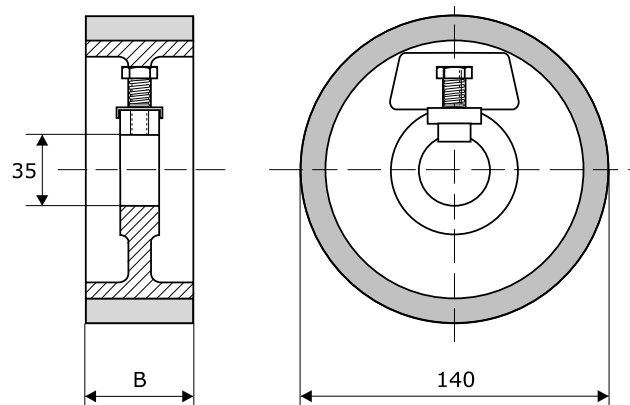
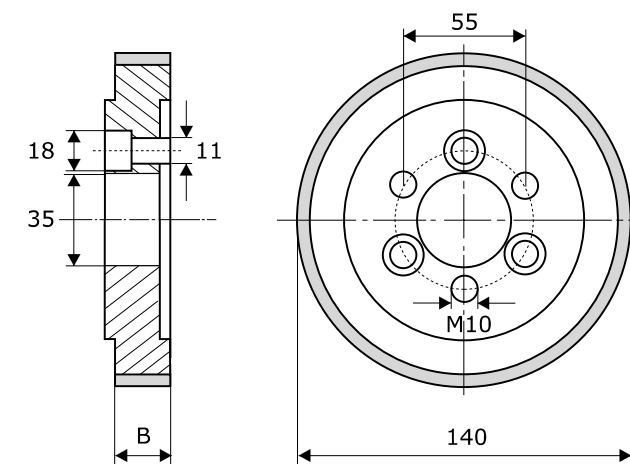
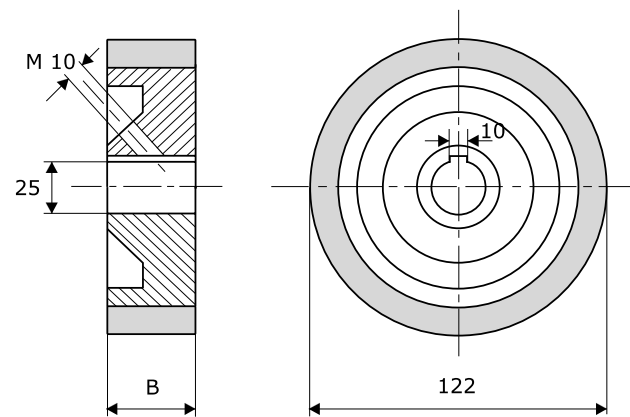
| | | |
|-------------|--------------------|--------------------|
| B (mm) | 50 | 20 |
| Kat. št. | | |
| Bestell Nr. | 120-50-25 Guilliet | 120-20-25 Guilliet |
| Cat. No | | |



18



19



www.rando.nl

Vierseiter, H+K

| | | |
|-------------|----------------------|----------------------|
| B (mm) | 50 | 20 |
| Kat. št. | | |
| Bestell Nr. | 122-50-25 Vierseiter | 122-20-25 Vierseiter |
| Cat. No | | |

SCM

| | | | | |
|-------------|-----------|-----------|-----------|-----------|
| B (mm) | 20 | 25 | 40 | 50 |
| Kat. št. | | | | |
| Bestell Nr. | 140-20-3V | 140-25-3V | 140-40-3V | 140-50-3V |
| Cat. No | SCM | SCM | SCM | SCM |

SCM

| | | | |
|-------------|------------|------------|------------|
| B (mm) | 50 | 30 | 20 |
| Kat. št. | | | |
| Bestell Nr. | 140-50-35V | 140-30-35V | 140-20-35V |
| Cat. No | SCM | SCM | SCM |

gumirani in PU koloti
gummierte und PU rollen
rubber and PU rollers



A

gumirani in PU koluti
gummierte und PU rollen
rubber and PU rollers

www.rando.nl

SCM

B (mm) 50 20

Kat. št.
Bestell Nr. 120-50-30V SCM 120-20-30V SCM
Cat. No

SCM

B (mm) 60 30

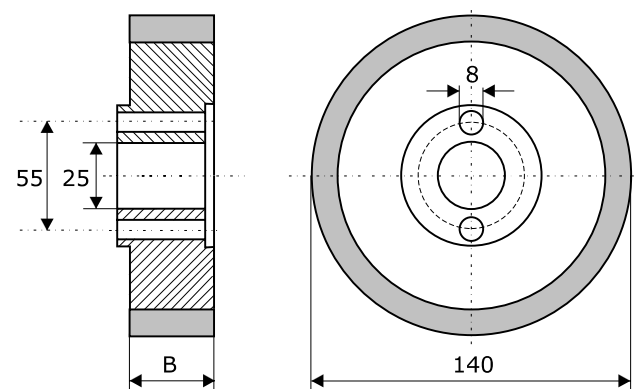
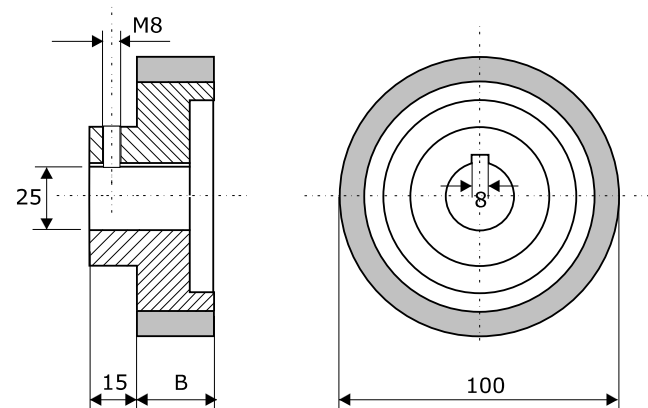
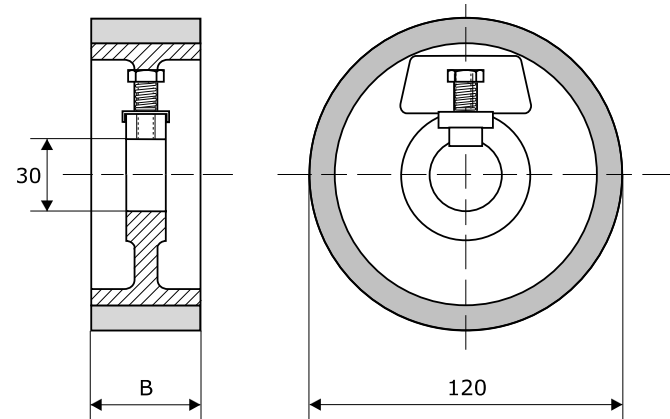
Kat. št.
Bestell Nr. 100-60-25V SCM 100-30-25V SCM
Cat. No

WADKIN

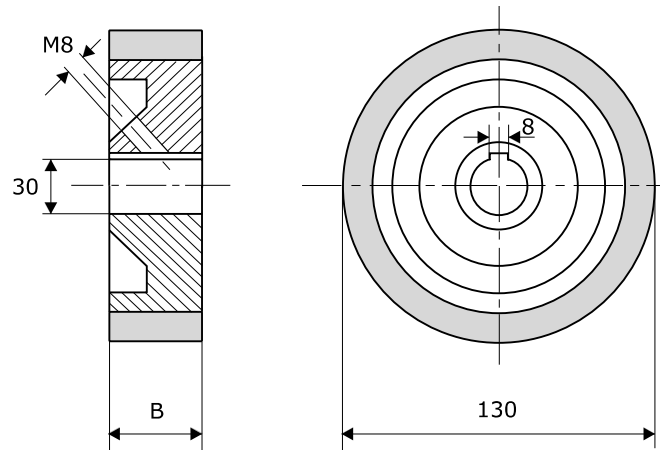
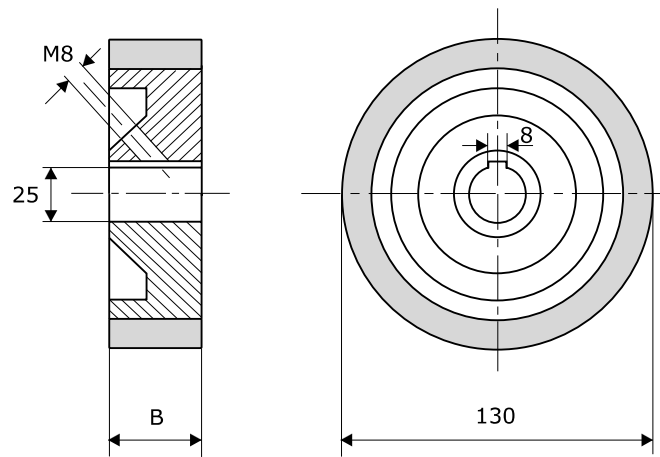
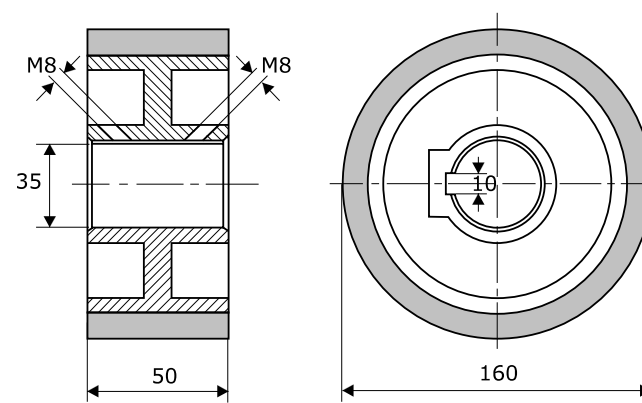
B (mm) 50 20 10

Kat. št.
Bestell Nr. 140-50-25 Wadkin 140-20-25 Wadkin 140-10-25 Wadkin
Cat. No

20



21



www.rando.nl

VERBOOM

Kat. št.
Bestell Nr. 160-50-35 Verboom
Cat. No

TSN

B (mm) 50 30 25 20

Kat. št.
Bestell Nr. 130-50-25 TSN 130-30-25 TSN 130-25-25 TSN 130-20-25 TSN
Cat. No

TSN

B (mm) 50 20

Kat. št.
Bestell Nr. 130-50-30 TSN 130-20-30 TSN
Cat. No

gumirani in PU koluti
gummierte und PU rollen
rubber and PU rollers



A

MARTIN

Kat. št.
Bestell Nr. 122-50-40 Martin
Cat. No

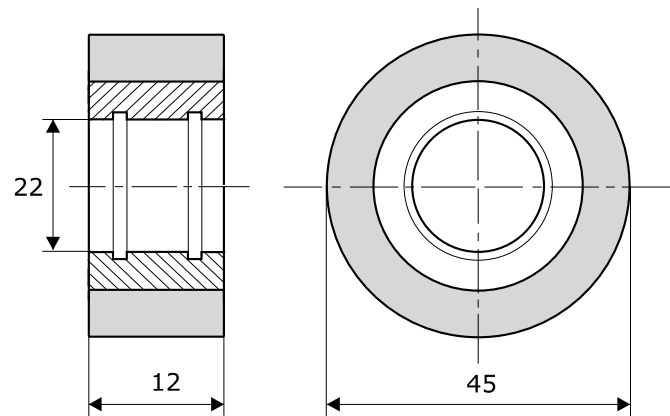
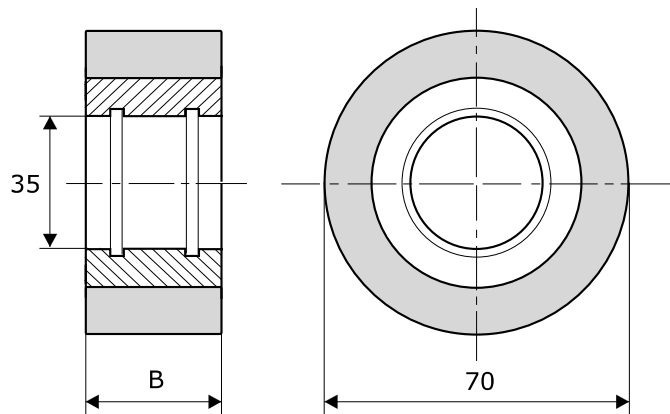
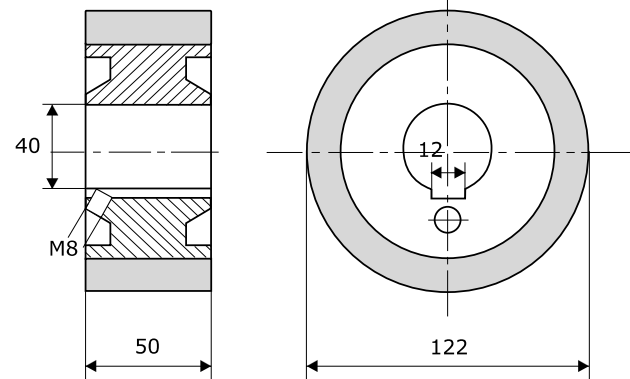
UMMANTELUNGSMASCHINEN

| | | | |
|-------------|----------|----------|----------|
| B (mm) | 50 | 25 | 15 |
| Kat. št. | | | |
| Bestell Nr. | 70-50-35 | 70-25-35 | 70-15-35 |
| Cat. No | | | |

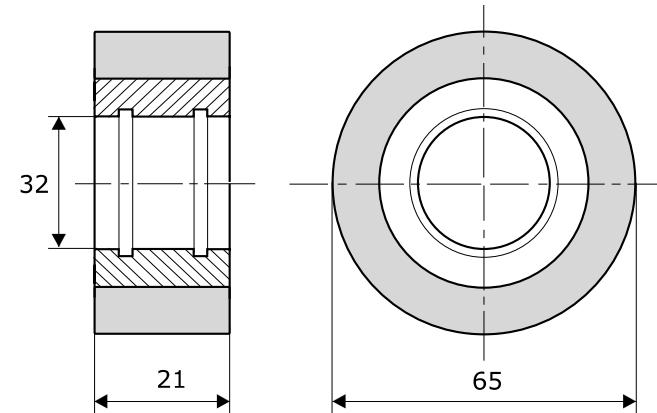
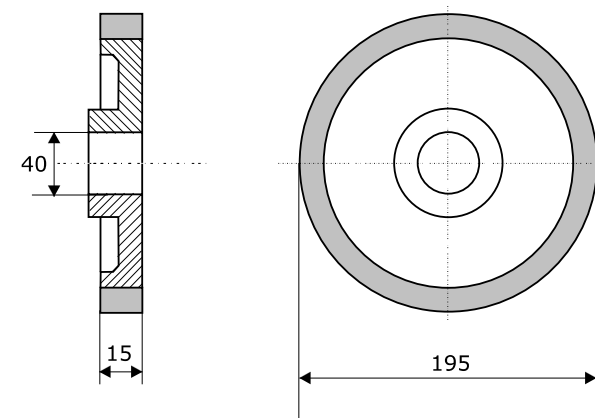
UMMANTELUNGSMASCHINEN

Kat. št.
Bestell Nr. 45-12-22
Cat. No

22



23



DÜSPOHL

Kat. št.
Bestell Nr. 195-15-40
Cat. No

BIMATIC

Kat. št.
Bestell Nr. 65-21-32
Cat. No



A

Oblika zob
Das Zahnprofil
Teeth shape



Profil A - Weinig standardni profil
Profil A - Weinig Standardprofil
Profile A - Weinig standard profile



Profil B - za moker les
Profil B - Nassholzprofil
Profile B - wet wood profile



Profil C - standardni Elastomeri
Profil C - Elastomeri Standardprofil
Profile C - standard Elastomeri profile



Profil D - stari Weinig
Profil D - Altes Weinigprofil
Profile D - old Weinig profile



Profil E
Profil E
Profile E



Profil F
Profil F
Profile F



Profil G
Profil G
Profile G

Smer zob
Richtung der Verzahnung
Teeth direction



ravno zobljenje -
oznaka R
Geradverzahnt -
Bezeichnung R
straight-toothed -
order number R



poševno zobljenje -
brez oznake
Schrägverzahnt -
ohne Bezeichnung
helix-toothed -
no order number

www.rando.nl

Nakup novih, standardnih kolotov
Na zalogi imamo različne tipe standardnih kolotov; naročite, pošljemo takoj!

Ob naročilu prosimo navedite znamko stroja, dimenzije kolota (premer, širina, izvrtina, utor) in opis zobljenja (oblika zob, smer zob, material). Skupna oznaka vseh zobatih kolotov je **Z**.

Primer naročila:
kolot 140-50-35 ZB chr Weinig pomeni zobat kolot za stroj Weinig, premera 140 mm in širine 50 mm, za obdelavo mokrega lesa, poševno zobljen, kroman

Obnova obrabljenih kolotov
Ponovno nabrusimo obrabljene zobe jeklenih kolotov.

Izdelava kolotov po naročilu
Če v našem bogatem proizvodnem programu ni kolota, ki ga potrebujete, ga bomo radi izdelali po vašem načrtu.

Material
Vsi koloti so izdelani iz kaljenega jekla, ki ga dodatno kromamo, s čimer dosežemo izjemno odpornost in dolgotrajno delovanje izdelka.

Po želji lahko izdelamo tudi nekromane kolote.

Einkauf von neuen Standard-Rollen
Wir haben auf Lager verschiedene Arten von Standard-Rollen. Sie bestellen und wir liefern prompt!

Bei der Bestellung bitten wir Sie den Maschinentyp und die Rollen-Dimensionen anzugeben (Durchmesser, Breite, Bohrung, Keilnut) und die Beschreibung der Zähne (Zahnprofil, Richtung und Material). Die gemeinsame Bezeichnung für alle verzahnte Rollen ist **Z**.

Beispiel:
Rolle 140-50-35 ZB chr Weinig bedeutet: Verzahnte Weinig Rolle, Durchmesser 140 mm, Breite 50 mm, für Nassholz, schrägverzahnt und verchromt

Erneuerung von gebrauchten Rollen
Wir schleifen die abgenutzten Zähne der Stahlrollen.

Herstellung von Verzahnten Rollen nach der Bestellung
Falls Sie in unserem reichem Programm die Rolle, die Sie benötigen nicht finden, werden wir gerne diese Rolle, laut Ihrer Zeichnung, herstellen.

Das Material
Alle Rollen sind aus qualitativem gehärtetem Stahl, das noch verchromt ist, hergestellt. Damit erreichen wir ausnahmsreiche Verschleissfestigkeit und langfristige Funktion des Artikels.

Nach Wunsch können die Rollen auch unverchromt hergestellt werden.

Purchase of new, standard rollers
Many standard roller types on stock; you order, we send immediately!

When ordering, please specify roller dimensions (diameter, width, bore, key-ways), description of teeth (shape, direction), roller material and the producer of the machine. Order number **Z** is a general mark depicting all steel rollers.

Example:
Roller 140-50-35 ZB chr Weinig means a steel roller for Weinig machine, 140 mm in diameter and 50 mm wide, for wet wood processing, helix-toothed, chromium plated.

Renewal of worn out rollers
We sharpen blunt teeth of used steel rollers.

Special dimension rollers made to order
If you can not find a suitable roller in our wide standard program, we will be glad to manufacture rollers according to your design.

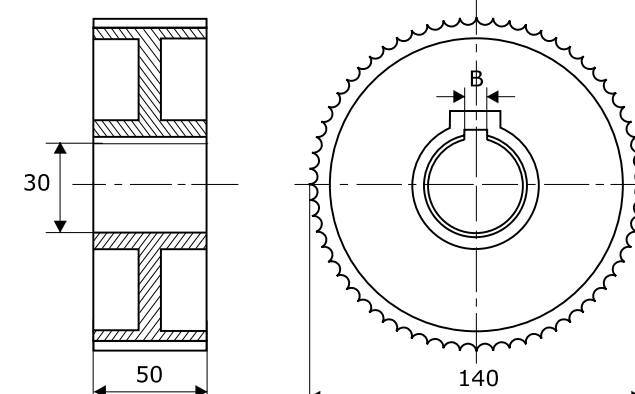
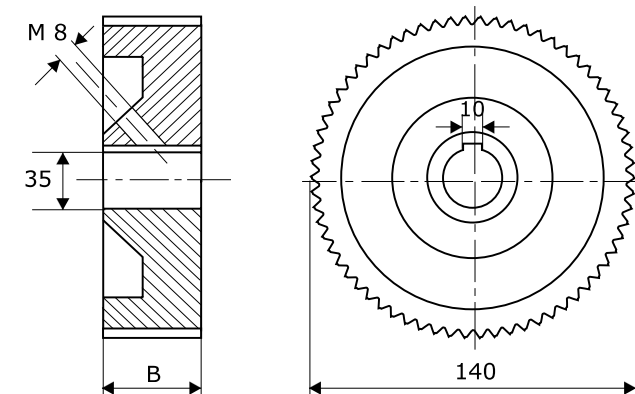
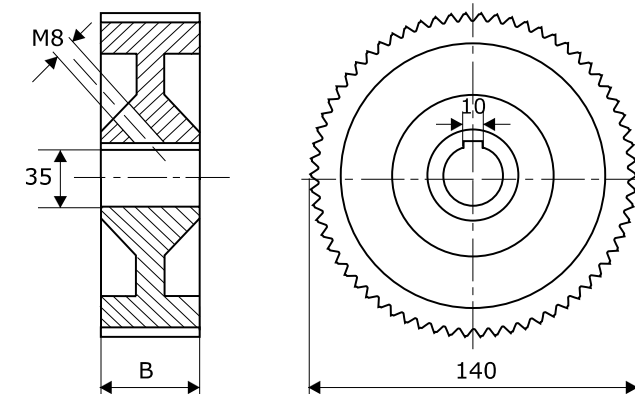
Roller material
All rollers are made of high quality hardened steel with additional chromium surface layer, which ensures an extra durability and considerably prolonged life time of the product.

Non chromium plated rollers available on special request.

24



25



www.rando.nl

WEINIG

B (mm) 50 30 25

Kat. št. 140-50-35 Z 140-30-35 Z 140-25-35 Z
Bestell Nr. 140-50-35 Z 140-30-35 Z 140-25-35 Z
Cat. No 140-50-35 Z 140-30-35 Z 140-25-35 Z

WEINIG

B (mm) 20 15 10

Kat. št. 140-20-35 Z 140-15-35 Z 140-10-35 Z
Bestell Nr. 140-20-35 Z 140-15-35 Z 140-10-35 Z
Cat. No 140-20-35 Z 140-15-35 Z 140-10-35 Z

WEINIG

B (mm) 50 30 20 15

Kat. št. 140-50-30 Z 140-30-30 Z 140-20-30 Z 140-15-30 Z
Bestell Nr. 140-50-30 Z 140-30-30 Z 140-20-30 Z 140-15-30 Z
Cat. No 140-50-30 Z 140-30-30 Z 140-20-30 Z 140-15-30 Z

zobati koloti
verzahnte rollen
steel rollers



B



WEINIG

B (mm) 50 30

Kat. št. 140-50-30-3V Z 140-30-30-3V Z
Bestell Nr. Cat. No

WEINIG

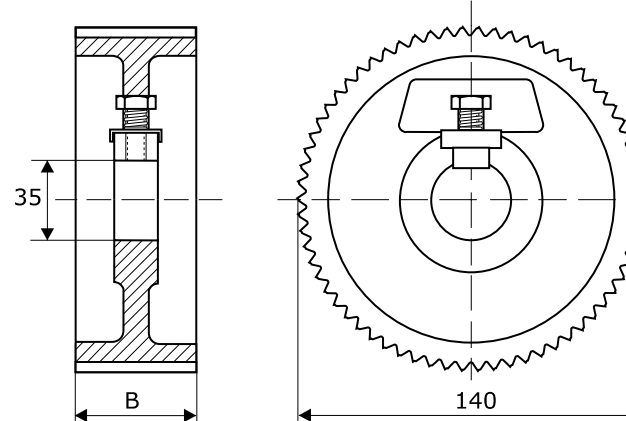
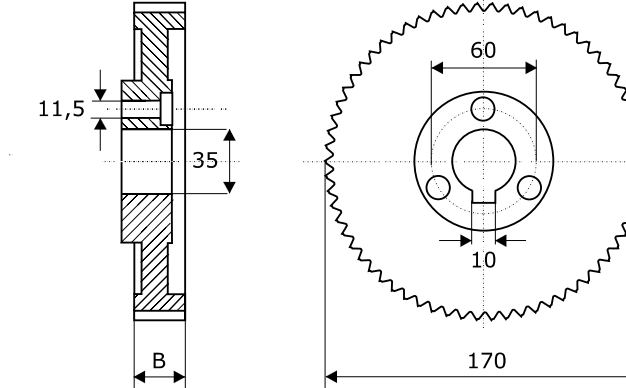
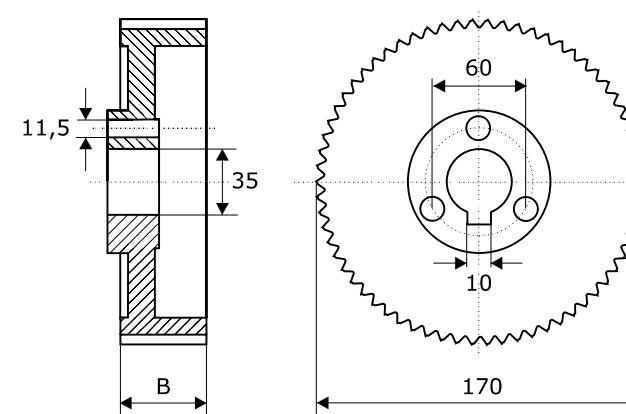
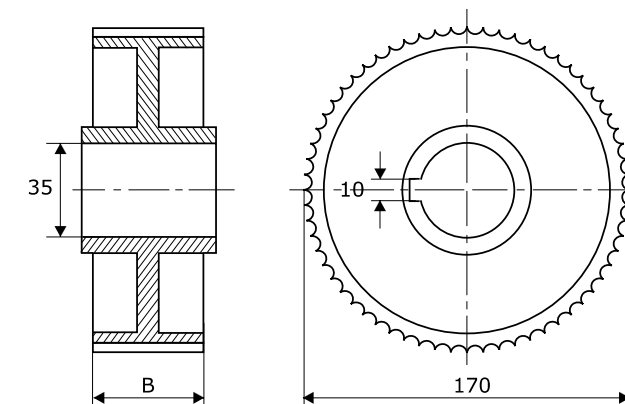
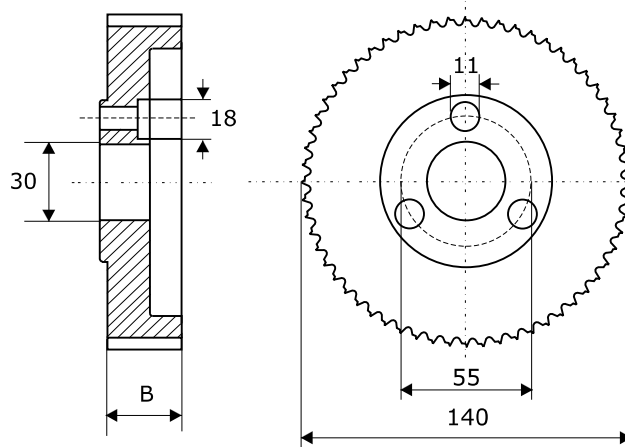
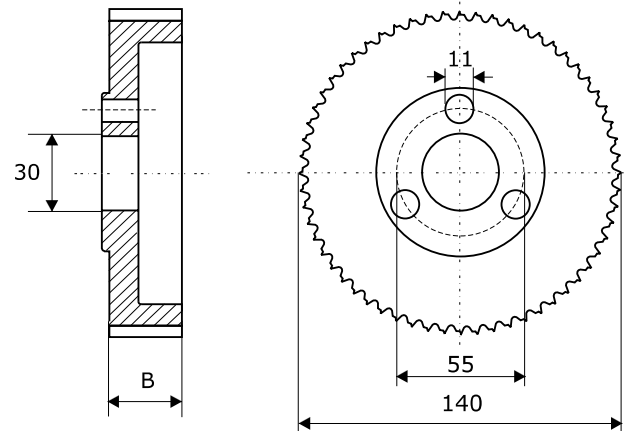
B (mm) 25 20 15

Kat. št. 140-25-30-3V Z 140-20-30-3V Z 140-15-30-3V Z
Bestell Nr. Cat. No

WEINIG

B (mm) 50 30 25 20 15

Kat. št. 140-50-35Z 170-30-35Z 170-25-35Z 170-20-35Z 170-15-35Z
Bestell Nr. Cat. No



WEINIG

B (mm) 50 30

Kat. št. 170-50-35-3V Z 170-30-35-3V Z
Bestell Nr. Cat. No

WEINIG

B (mm) 25 20 15

Kat. št. 170-25-35-3V Z 170-20-35-3V Z 170-15-35-3V Z
Bestell Nr. Cat. No

SCM

B (mm) 50 30 25 20

Kat. št. 140-50-35 Z 140-30-35 Z 140-25-35 Z 140-20-35 Z
Bestell Nr. Cat. No SCM SCM SCM SCM

SCM

B (mm) 50 20

Kat. št. Bestell Nr. 120-50-30 Z SCM 120-20-30 Z SCM
Cat. No

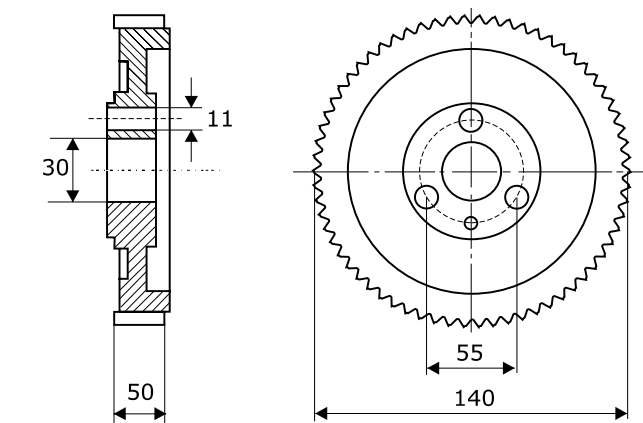
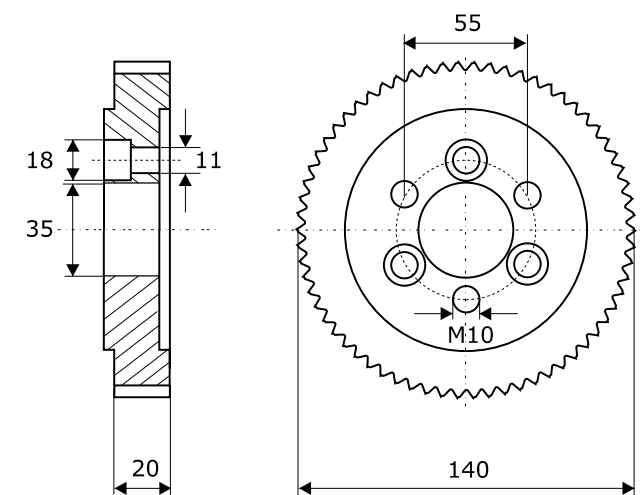
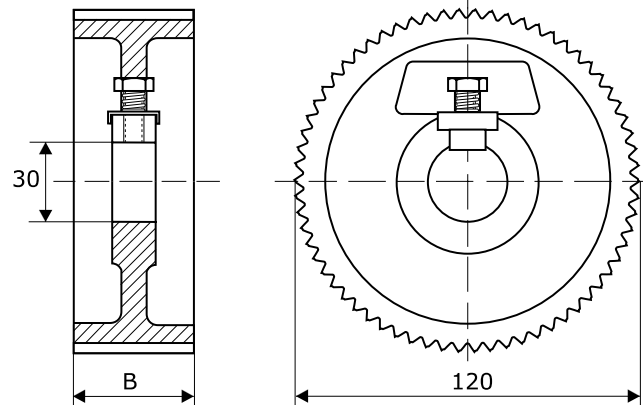
SCM

Kat. št. Bestell Nr. 140-20-35-3V Z SCM
Cat. No

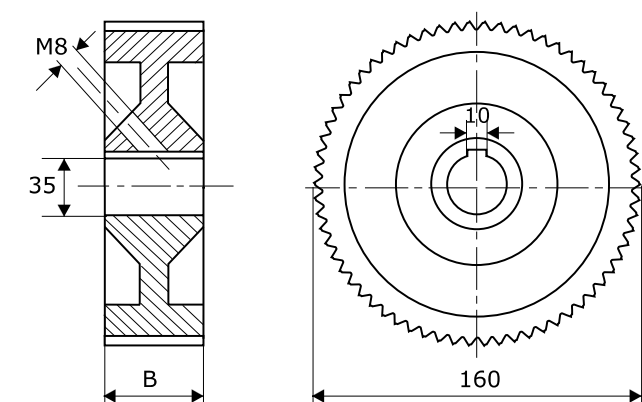
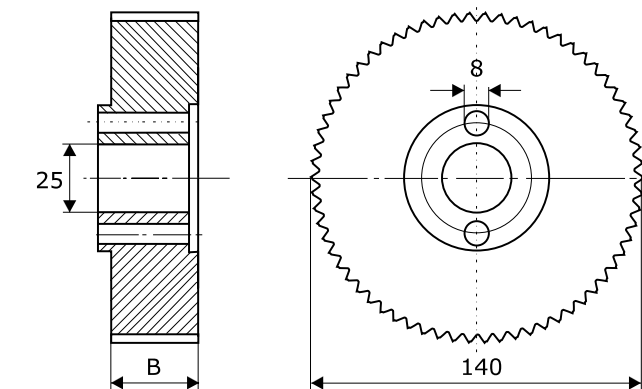
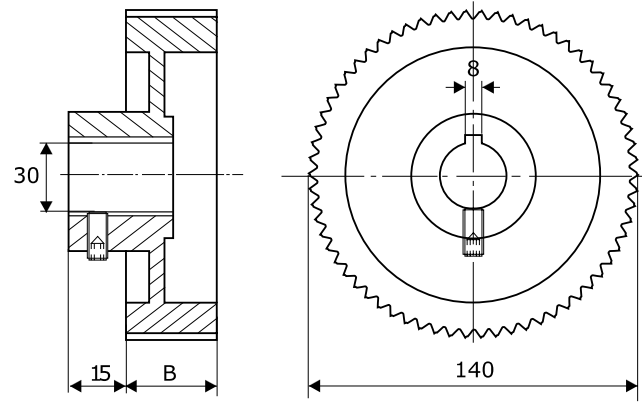
SCM

Kat. št. Bestell Nr. 140-50-30-4V Z SCM
Cat. No

28



29



GUBISCH

B (mm) 50 30 25

Kat. št. Bestell Nr. 140-50 Z 140-30 Z 140-25 Z
Cat. No Gubisch Gubisch Gubisch

WADKIN

B (mm) 50 20 10

Kat. št. Bestell Nr. 140-50-25 Z 140-20-25 Z 140-10-25 Z
Cat. No Wadkin Wadkin Wadkin

VERBOOM

B (mm) 50 25

Kat. št. Bestell Nr. 160-50-35 Z 160-25-35 Z
Cat. No Verboom Verboom



B



120-50, 120-60

B (mm) 50 60

Kat. št. 120-50 Z 120-60 Z
Bestell Nr. Cat. No

GUILLIET

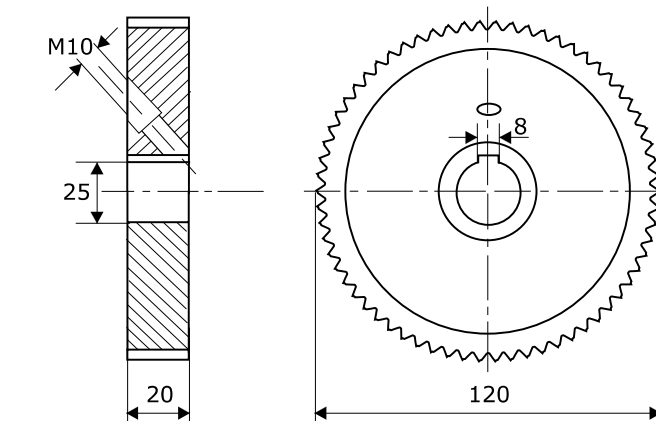
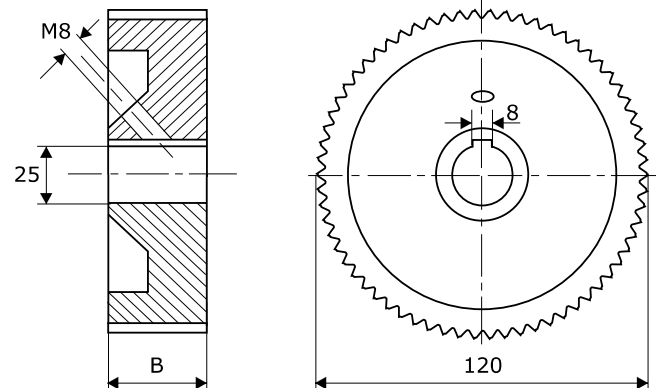
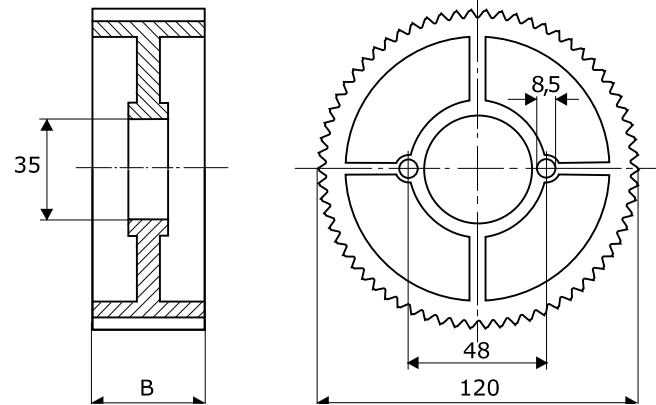
B (mm) 50 20

Kat. št. 120-50-25 Z 120-20-25 Z
Bestell Nr. Guilliet Guilliet
Cat. No

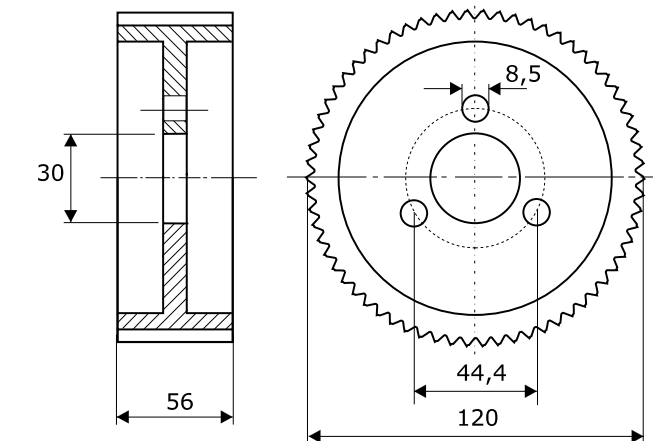
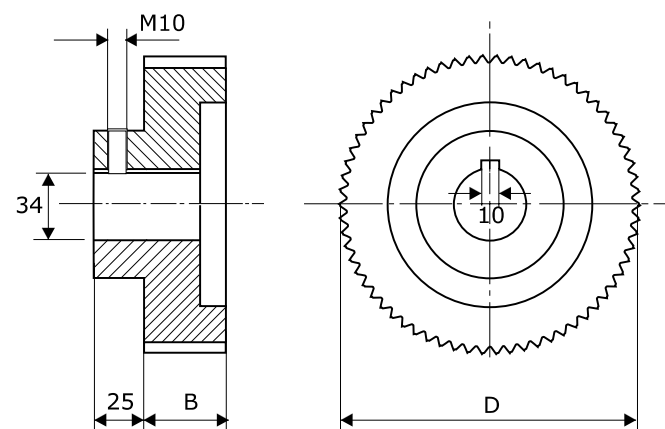
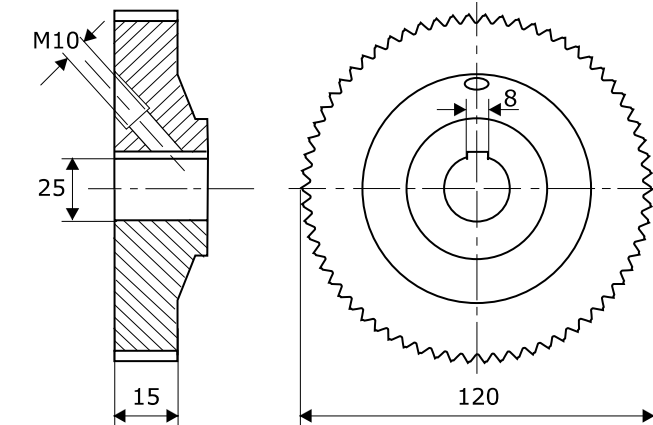
VIERSEITER, H+K

Kat. št. 120-20-25Z Vierseiter, H+K
Bestell Nr. Cat. No

30



31



VIERSEITER, H+K

Kat. št. 120-15-25 Z Vierseiter, H+K
Bestell Nr. Cat. No

HARBS

D (mm) 165 165 180 180 180

B (mm) 50 35 80 50 35

Kat. št. 165-50Z 165-35Z 180-80Z 180-50Z 180-35Z
Bestell Nr. Harbs Harbs Harbs Harbs Harbs
Cat. No

CHUET

Kat. št. 120-56-30-3V Z Chuet
Bestell Nr. Cat. No

CHUET

Kat. št.
Bestell Nr. 120-100-30-3V Z Chuet
Cat. No

TSN

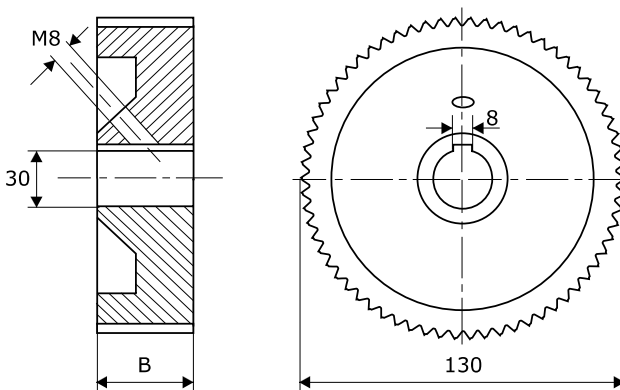
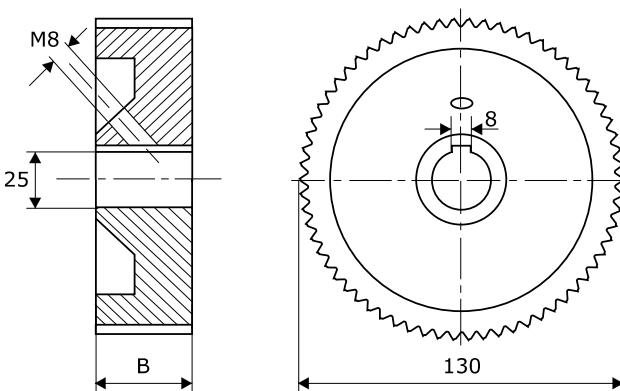
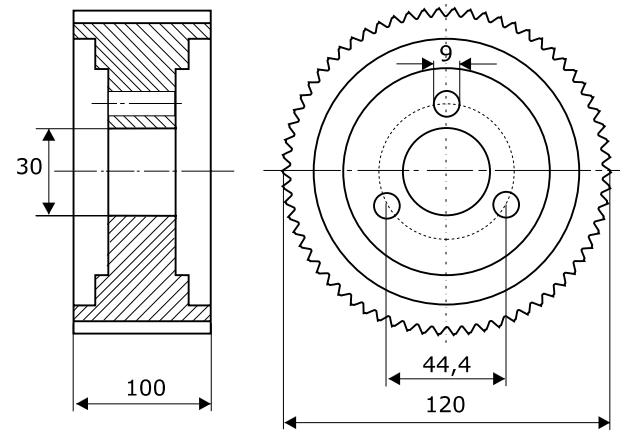
| | | | | |
|--------|----|----|----|----|
| B (mm) | 50 | 30 | 25 | 20 |
|--------|----|----|----|----|

| | | | | |
|-------------|-------------|-------------|-------------|-------------|
| Kat. št. | | | | |
| Bestell Nr. | 130-50-25 Z | 130-30-25 Z | 130-25-25 Z | 130-20-25 Z |
| Cat. No | TSN | TSN | TSN | TSN |

TSN

| | | | |
|--------|----|----|----|
| B (mm) | 50 | 25 | 20 |
|--------|----|----|----|

| | | | |
|-------------|-------------|-------------|-------------|
| Kat. št. | | | |
| Bestell Nr. | 130-50-30 Z | 130-25-30 Z | 130-20-30 Z |
| Cat. No | TSN | TSN | TSN |



TEHNIČNI IZDELKI IZ GUME
proizvodnja in obnova

- ploščice, čepki in obročki za robne furnirke (Brandt, Homag, HolzHer, Ott ...)
- valjčki za nanos lepila
- raznovrstni tehnični izdelki po vaših zahtevah

TECHNISCHE ERZEUGNISSE AUS GUMMI
Herstellung und Erneuerung

- gummierte Kettenscheiben, Zapfen und Ringe für Kantenanleimmaschinen (Brandt, Homag, HolzHer, Ott...)
- kleinere Walzen zum Auftragen von Leim
- technische Erzeugnisse nach Ihren Anforderungen

TECHNICAL RUBBER PRODUCTS
production and renewal

- rubber coated chain plates, plugs and rings for edgeling and bonding machines (Brandt, Homag, HolzHer, Ott ...)
- rollers for glue application
- various technical custom made products



HOMAG BRANDT

Kat. št.
Bestell Nr. 70-25-20-U Homag
Cat. No

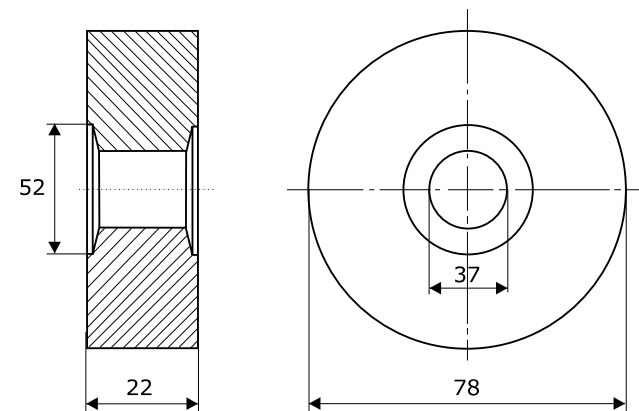
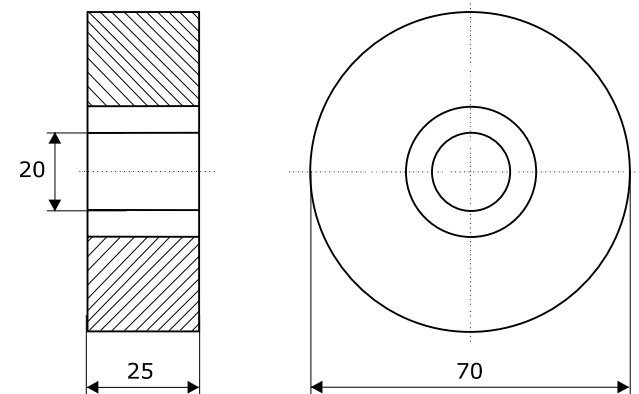
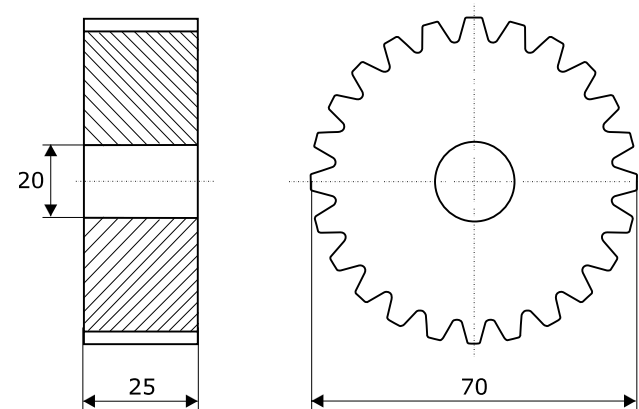
HOMAG BRANDT

Kat. št.
Bestell Nr. 70-25-20 Homag
Cat. No

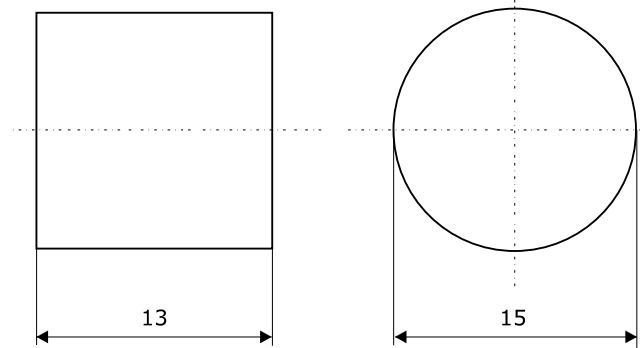
OLIMPIC RING

Kat. št.
Bestell Nr. 78-22-37 Olympic Ring
Cat. No

34



35



HOLZHER

Kat. št.
Bestell Nr. 15-13 Holzher
Cat. No



**GUMIRANI VALJI
obnova in proizvodnja**

- za kontaktne brusilke
- za nanos lepil
- za nanos lužil (penasta guma)
- za nanos barv in lakov
- transportni valji
- raznovrstni gumirani valji po vaših zahtevah

Rok obnove: 5 delovnih dni
ali po dogovoru

Maksimalne dimenzije valjev:

- maksimalna dolžina 3200 mm
- maksimalni premer 380 mm
- maksimalna teža 500 kg

**GUMMIERTE WALZEN
Erneuerung und Herstellung**

- für Breitbandschleifmaschinen
- zum Auftragen von Leim
- zum Auftragen von Beizen (Moosgummi)
- zum Auftragen von Farben und Lacken
- für Transportzwecke
- verschiedene gummierte Walzen nach Ihren Anforderungen

Lieferfrist bei der Erneuerung beträgt
5 Arbeitstage oder nach Vereinbarung

Max. Dimensionen der Walzen:

- max. Länge 3200 mm
- max. Durchmesser 380 mm
- max. Gewicht 500 kg

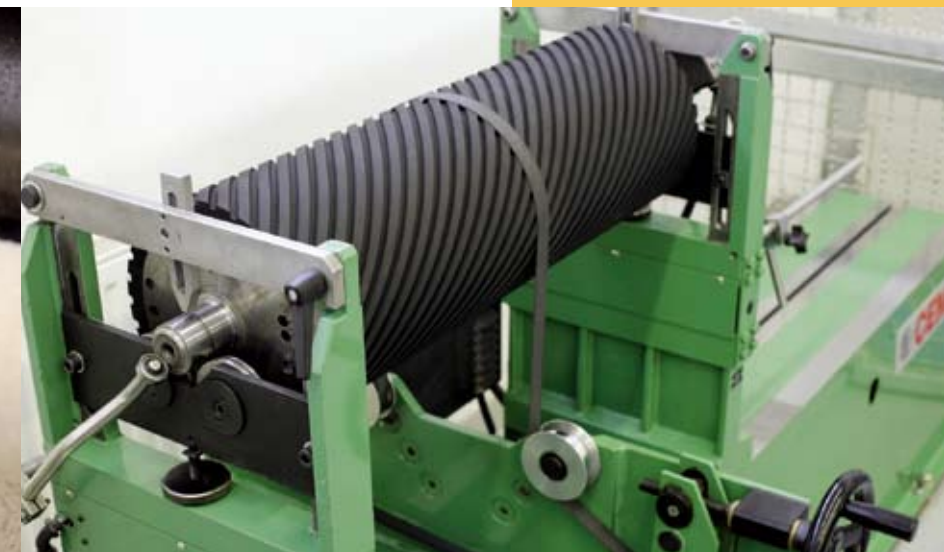
**RUBBER CYLINDERS
production and renewal**

- for sanders
- for gluing machines
- for staining machines (foam rubber)
- for paint and varnish machines
- for conveyors
- various custom made rubber cylinders

Repair time: 5 working days (shorter
term possible on request)

Max. cylinder dimensions:

- max. length 3200 mm
- max. diameter 380 mm
- max. weight 500 kg



DODATNE STORITVE

- izdelamo kovinska jedra valjev ali popravimo poškodovana jedra
- brusimo in bombiramo obrabljene gumirane valje
- dinamično balansiramo vse vrste valjev

DIENSTLEISTUNGEN

- Herstellung von Walzenkernen und Reparatur von beschädigten Walzenkernen
- Schleifen und Bombieren von abgenutzten gummierten Walzen
- Dynamisches Balancieren der Walzen
- Entfernung und Entsorgung von alten Gummibelägen

SERVICE

- metal cylinder core production and repair of damaged cores
- cylindrical and convex-concave grinding
- dynamic balancing of cylinders