

surface planers

formula f 2

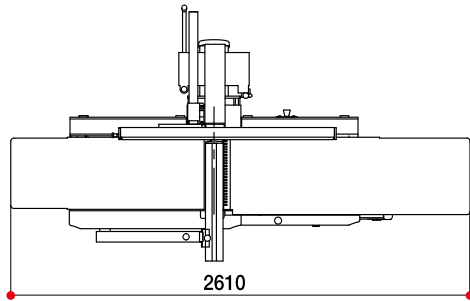
formula f 1

Perfect surface, practical and ergonomic
Both models feature long, cast-iron work tables and a large anodised aluminum fence. An optimum **high-quality finish** is guaranteed even on large size work pieces.

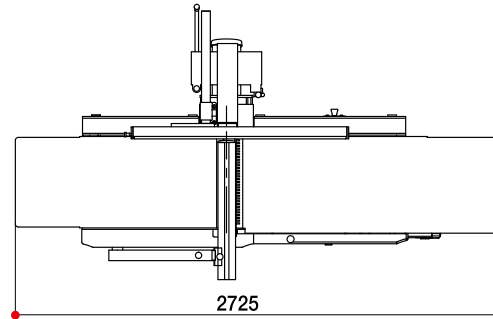


formula f 2
(no CE version)

formula f 1



formula f 2



HOUTBEWERKINGSMACHINES

AFZUIGINSTALLATIES

GEREEDSCHAPPEN



TEL. (0515) 43 15 70 - www.rando.nl - SNEEK

ONDERHOUD - REPARATIE - REVISIE

S Standard
O Option

| formula | | f 1 | f 2 | f 2 (non CE) |
|--|----|----------|----------|--------------|
| Working width | mm | 410 | 520 | 530 |
| Maximum removal | mm | 8 | 8 | 8 |
| Total length of work tables | mm | 2610 | 2720 | 2900 |
| Dimensions of the surfacing fence | mm | 1200x190 | 1200x190 | 1500x155 |
| Exhaust outlet diameter | mm | 120 | 160 | 120 |
| Motor power with direct start | kW | 5 | 5 | 5,5 |
| Motor power with star-delta start (option) | kW | - | 7 | - |
| Standard features and main optional devices | | | | |
| Cutterblock with 4 knives | | S | S | S |
| “Tersa” cutterblock with 4 throwaway knives | | O | O | - |
| Additional overturning fence | | O | O | - |
| “Xylent” spiralknife cutterblock | | O | O | - |
| Maintenance case for “Xylent” spiralknife | | O | O | - |
| Automatic star-delta start | | O | O | - |

thicknessing
planers

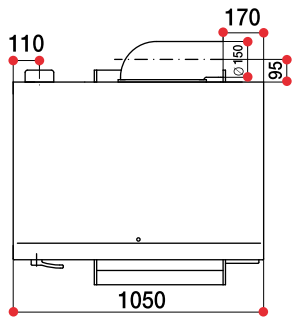
formula sp 1
formula sp 2

Sturdiness but also easy-to-use and precise, stylish with practical design, a wide range of applications.

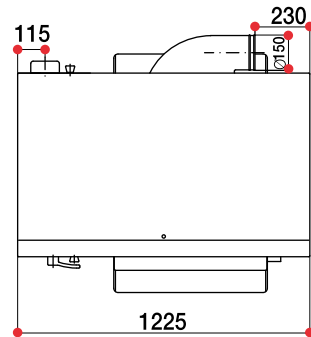


formula sp 1
(no ce version)

formula sp 1



formula sp 2



S Standard
O Option

HOUTBEWERKINGSMACHINES

AFZUIGINSTALLATIES

GEREEDSCHAPPEN



TEL. (0515) 43 15 70 - www.rando.nl - SNEEK

ONDERHOUD - REPARATIE - REVISIE

| formula | | sp 1 | sp 1 (non CE) | sp 2 |
|--|-------|-----------|---------------|-----------|
| Working width | mm | 520 | 530 | 630 |
| Maximum removal | mm | 8 | 8 | 8 |
| Work table length | mm | 1000 | 950 | 1000 |
| Work table height | mm | 250 | 300 | 300 |
| Feed speed | m/min | 5/8/12/18 | 8/16 | 5/8/12/18 |
| Exhaust outlet diameter | mm | 150 | 160 | 150 |
| Motor power with manual star-delta start | kW | 7 | 5,5 | 7 |
| Standard features and main optional devices | | | | |
| Outfeed rubber-coated steel roller | | S | - | S |
| 3rd top feed roller, rubber-coated & power driven | | O | - | O |
| Work table with 2 idle rollers | | O | S | O |
| 1st powered sectioned steel feed roller | | O | - | O |
| Cutterblock with 4 knives | | S | S | S |
| "Tersa" cutterblock with 4 throwaway knives | | O | - | O |
| Electric work table lifting | | S | - | S |
| "Xylent" spiralknife cutterblock | | O | - | O |
| Maintenance case for "Xylent" spiralknife | | O | - | O |
| Motor power with automatic star-delta start 9 kW | | O | - | O |
| Automatic star-delta start | | O | - | O |

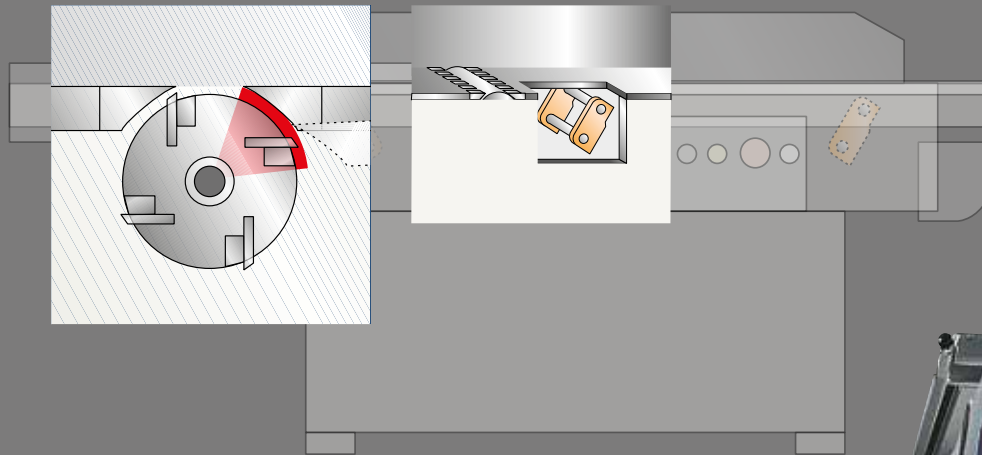
planers operating groups

formula series thicknessers are renowned for their strength.

The operating unit with a four-knife cutter block guarantees a high-quality finish. An infeed roller with helical grooving and a rubber coated outfeed roller ensure efficient and smooth work piece feed.

Surfacing fence

The fence is mounted on a precision mechanism enabling accurate angle adjustment from 90° to 45°.



High quality finish

Work tables made from ribbed cast-iron
The ribbed work tables structure with the feeding by means of a parallelogram mechanism on connecting rods always gives the same distance between the cutterblock and the table. This enables a quick and easy adjustment of the stock removal rates. The strong cast-iron structure of the cutter block with 4 knives grants optimal finish and absence of vibration.

formula f 1, formula f 2



Sturdy structure with precision

Work table movement

The ground, cast-iron work table is mounted on four recirculating ball screws simultaneously driven by a chain guaranteeing **the best working stability**. The machines in CE version are equipped with electric adjustment as standard feature; a solution offering **ease-of-use, precise and rapid set-up**. The non CE version foresees the work table lifting by means of handwheel.

formula sp 1, formula sp 2.



Ease-of-use

Controls

All the controls are in an ergonomic position on the front of the machine such as the feed speed selector, the electric work height adjustment and a mechanical digital readout of working height.

formula sp 1, formula sp 2

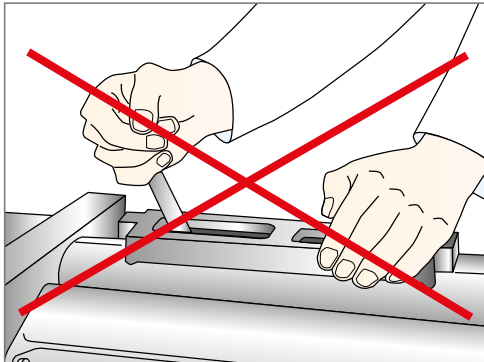


planers optional devices

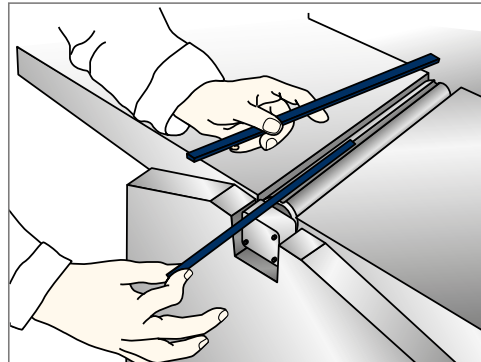


Simple and rapid
“Tersa” cutter block with throwaway
knives

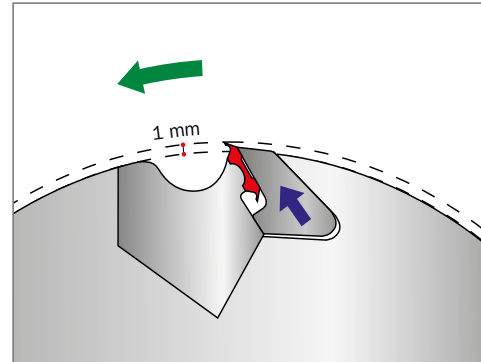
Automatic knives clamping by means of the centrifugal force ensures **safe and precise machining**. The system, without fixing screws makes knives substitution extremely fast.



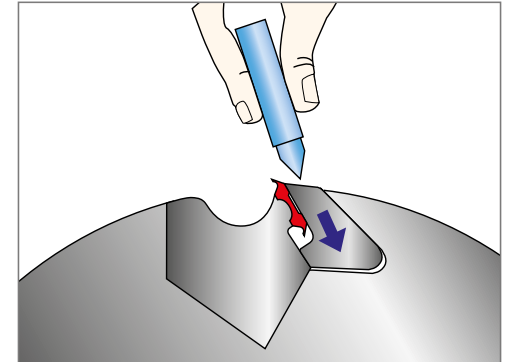
The specific knives fixing system to the cutterblock eliminates the setting up times.



Easy cutter block knives introduction.



Knives self-locking at the machine starting thanks to the centrifugal force. The automatic projection of all knives is perfectly adjusted.



Quick knives substitution by gibs unlocking.

“Xylent” spiralknife cutter block

The 3 spiralknives give an **exceptional finish**. **Reduced noise** during machining provides a more comfortable working environment. It also improves the dust extraction due to the production of very small chips. Each cutter has 4 tips which can be rotated into the cutting position when worn. Therefore increasing the production life of the cutter block before knives require replacement.



The **thickening work table** can be equipped with two rollers to **optimise work piece feed and throughput**.
formula sp 1, formula sp 2



Maintenance case for “Xylent” spiralknife

Complete with:

- 1 cleaning/degreasing liquid bottle for the resins cleaning
- 1 set dynamometric key
- 2 bit Torx
- 10 inserts
- 5 screws
- 1 brass bristle brush to clean the spindle with mounted in inserts
- 1 steel bristle brush to clean the inserts housings

Third feed roller

This is a powered, steel or rubber-coated roller designed to ensure perfect workpiece feed with any type of wood.

formula sp 1, formula sp 2

